

# **ROBINSON'S SEEDS & PLANTS SEASON 2025**

Established 1860

**Growing and Showing Vegetables for 164 years  
'For edibles which taste as good as they look'.**





Newly planted Mammoth Blanch Leek



Trays of young plants on the nursery.





Welcome to our 2025 season catalogue.

2024 has been a year of challenges in the vegetable garden. Lots of rain in early spring making the planting of many vegetables later than normal. The main problem in 2024 seemed to be the weather, slugs and the change of compost. However, despite the years problems excellent results have again been reported.

There have been some fine onions grown from the Mammoth Improved and Mammoth Red varieties. Leeks have grown well, they are a vegetable which prefers a cooler climate.

Once again vegetables which are grown during the summer and harvested for storage or left growing through the winter are popular. Kale, chard and spinach are ideal for cut and come again use in the winter, are full of vitamins and can easily be grown in containers. Many squashes can be grown in summer and stored for use in the winter. Chillies are still as popular; they make a wonderful conservatory or window ledge plant and are very easy to grow. We have varieties differing in heat intensity from mild to extremely hot.

Please be aware that compost is now peat free. This means a different approach is required. Small seeds can struggle in rough compost so follow the golden rule 'Seeds should be covered the depth of the seed.' To help the seed germinate ensure the compost is fine enough for sowing and water properly. Establish a feeding plan which is appropriate to the vegetable variety to achieve successful results.

**Our Potato Weekend for 2025 will be held on 1st and 2<sup>nd</sup> of February for further details ring the nursery or visit our website or Facebook page.**

All plants are grown using natural methods in glasshouses heated by biomass boilers. The mail order plants are packed using natural or biodegradable products. New to the catalogue this year we have plants of the Rose of Roscoff onion, the sets are still unavailable.

The nursery is open every day from March to June for all your vegetable seed and plant needs, then Monday to Friday only from July. We have many varieties of tomato, chilli, cucumber, brassica plus of course our famous onions and leeks. For the later months we have plants suitable for overwintering including kale, purple sprouting broccoli, leeks, spring cabbage, garlic and autumn planting onion sets.

**See opening hours on the back of the catalogue.**

**To order online go to [www.mammothonion.co.uk](http://www.mammothonion.co.uk). Visit our Facebook page for info on life at the nursery and for pictures of our displays at the flower shows we visit. [www.facebook.com/mammothvegetables](https://www.facebook.com/mammothvegetables)**

Kind regards and good gardening,  
**The Robinsons**



# W. Robinson & Son (Seeds & Plants) Ltd

Sunny Bank, Forton, Preston, Lancs, PR3 0BN

Tel: 01524 791210

www.mammothonion.co.uk e-mail: info@mammothonion.co.uk



find us on Facebook.com/mammothvegetables

## OUR HISTORY,

Our founder, William Robinson, started the nursery in 1860. At that time the nursery grew a very different range of crops, ranging from soft fruit, apples, plums and pears, to onions, leeks and all the usual vegetables of the time. He also kept cows and horses to use on the smallholding.

The next generation, also called William Robinson, started to improve the size of onions and leeks. This was done and still is by selection. Only the best specimens were allowed to seed. He started to exhibit the results in the local Flower Shows of the time, winning many prizes. Soon other exhibitors wanted to grow the strain and the vegetable business as we know today was born. He called all his large varieties by the prefix Mammoth. Many of the unusual and heritage vegetables grown on the nursery come from these early days.

In the 1950's and 60's the 3<sup>rd</sup> generation, William Martin Robinson, brought the large strains into the forefront of exhibition varieties. He was awarded the Royal Horticultural Societies Victoria Medal of Honour in 1979 and in 1986 made a Fellow of the Institute of Horticulture. He was instrumental in the foundation of the National Vegetable Society and for many years their Chairman and President. In 1972 all the varieties were registered under the EU rules as distinct and could now be sold in Europe.

The nursery is now run by the 4<sup>th</sup> and 5<sup>th</sup> generation who continue with the tradition of quality vegetables which taste as good as they look. We are pleased and proud to be a true family business on the same site where our ancestors started the nursery. The ground where we grow our exhibition vegetables is prepared using natural products and the same formula as 164 years ago and all seeds and plants are grown using natural predators rather than a chemical spray.





**We hope the following hints will aid the growth of your onions. Our methods have remained unaltered since the early 1900's. For further hints on all vegetable cultivation go to [www.mammothonion.co.uk](http://www.mammothonion.co.uk)**

**Mammoth onions** are best sown from late December to late February. A tray 30cms X 30cms will hold approx.100 seeds. Using John Innes sowing compost sow the seeds and cover with the same compost. Germination should take approximately 2 weeks at a temperature of 13deg C. Keep the seeds moist but never over water at this stage. We have found that a higher germination temperature will in many cases damage the seeds, thus giving poor results. After germination and when the seedlings are at the 'crook' stage, transplant the young seedlings into stronger John Innes compost. At this stage individual pots may be used. Lift the seedlings gently as they are very easily damaged. Water only when the seedlings require it. Botrytis at this stage can be devastating so ventilate on all possible occasions but still keep the temperature at 13deg C. Transfer the young plants out of the greenhouse to a cold frame during Mid to Late March. This ensures the plants are well hardened off prior to planting outdoors from Late April. Planting times will vary according to the area and conditions at that time. Onions grown for exhibition will benefit from being covered by cloches at this time. The smaller onions both red and white varieties are grown using a similar method. They can however be sown later.

Choose an open site with good drainage. For exhibition onions, trench 50cm deep. Fork up the bottom of each trench if solid. Into every 3sq metres of the bed work the following:- 4 Forkfuls of pea, bean or tomato haulms. 1 garden barrow of well-rotted farmyard manure. 140gms Bonemeal.170gms Sulphate of Potash First scatter the haulms at the bottom of the trench, and then mix the fertiliser into the bed. It is essential that the greater proportion of the manure should be near the top of the bed, some within 10cms of the surface. This will enable the roots to come into contact with the manure during the early stages of growth. This work is best done in the Late Autumn or Early Winter when reasonably dry. The bed can then be left rough over the winter period. In March work the top into a fine tilth adding the following to an area of 3sq metres. 55gms Superphosphates. 28gms Hydrated Lime or Seaweed Meal. (amounts can vary according to soil type and whether the onions are to be grown for exhibition or kitchen, exhibition ground tends to be acidic quicker than general ground, hence the need for Lime or Seaweed Meal. On ground for general vegetables this need only be done every third year on exhibition ground every year.)

There is no need to firm the ground unless it is very light. When conditions allow, and this will depend on several factors, plant out the now hardened off onion plants. The usual time for planting is Mid April to Mid-May. An advantage is gained by the use of cloches both before and after planting. Cloches used prior to planting will warm the ground giving less chance of a check in growth at this time. Care should be taken after planting not to leave covers over for too long. We have found that 3-4 weeks is sufficient.

Onions can be grown on the same ground for many years; our own onion bed is now 140 years old and has grown onions continuously for this time. However a strict health routine must be followed if you require using the same ground again and again. If any onions are suspect always remove not only the plant but also a small amount of soil from where the onion was growing. Hopefully this will remove any unwanted bacteria in the soil. If the onions are required for general kitchen use or it has not been possible to prepare the ground in the autumn we suggest the following. When possible work into the ground one barrowful of farmyard manure to 3sq metres. Prior to planting add a good general fertiliser, we use Vitax Q4. Seaweed Meal can be added at this time. During the growing season never allow the onion bed to become dry, especially during June and July when the onions are growing well.

The planting distance for onions can vary according to the result required. For exhibition we suggest a planting distance of no nearer than 30cm X 30cm, for kitchen use this may be reduced to 20cm X 20cm. Feeding onions on established beds should not be necessary. Feeding on ground, which has been cultivated for a number of years, can do harm. If feeding is required it must be done in the early season. Over feeding can result in onions with thick necks and poor keeping qualities Water on all occasions when onions are dry. Onions will store better if harvested with a little growth left in the plant. For exhibition lift the onions 10-14 days prior to the show to give the bulb time to dry. Cut the root and top off, leaving enough top to tie down for the show bench. Remove any dead or broken skin and leave to dry in a warm dry area. A greenhouse is ideal for this purpose. Exhibitors will after 7 days be able to turn the tops over for good presentation. For tying down we have found that rubber bands work very well. As the neck of the onion shrinks so does the rubber ban, this avoids re-tying. For kitchen use the onions once dry can be stored in a cool but frost free shed or garage.

**Leeks** are propagated in the same way as onions using the same compost and greenhouse temperature. We do not advise sowing before the 3rd week in January; this avoids the risk of running to seed later in the season. Leeks benefit from a second potting in the third leaf stage. We suggest the leeks be planted outside two weeks after the onions. Again an advantage is gained by giving protection after planting.

Trench and manure the same as for onions when growing for exhibition, but use only half the amount of Bone Meal and Sulphate of Potash. For exhibition do not plant in trenches but on the flat no nearer than 30cm X 30cm.

For kitchen use, leeks may be planted from late April to late June. The traditional method of dropping the leek plant into a 12cm hole may be used. If feed is needed, use the same as for onions but leeks may be fed until later in the growing season.

When growing leeks for exhibition the method of blanching is really one of personal preference. The method we have used historically is one now used by most exhibitors. The leek is planted on the flat and allowed to grow for several weeks. When the plant is large enough a land tile or piece of drainpipe is placed over the top of the plant. There should be 3 or 4cms of leaf showing out of the top. Never fill this tile or pipe with peat etc., as the leek will fill this as it grows. A land tile is used for draining land but these are becoming difficult to obtain so the drainpipe is a useful alternative and should be cut to 30cms tall. For extra blanch a larger tile or pipe is placed over the top and the inner one drawn up supported by peat at its base. This forms a telescope action and the inner tile can be continued to be lifted as required.

### **A QUICK GUIDE TO WHAT AND WHEN IN THE VEG PATCH**

**JANUARY** Sow Mammoth onions. Sow Mammoth leeks from the 3rd week. Sow salad vegetables for growing in heated greenhouse. Give the spring cabbage planted last autumn a high nitrogen feed. Check crops in store.

**FEBRUARY** Sow smaller varieties of onions and leeks. Sprout 1st early potatoes. Sow early tomatoes, chilli, sweet peppers and aubergine. Give all overwintered onions and garlic a top dressing of general fertilizer.

**MARCH** Sow Jolant and Lancaster leeks, early lettuce, chilli and sweet peppers, aubergine and brassica. Outdoor tomato varieties can be sown.

**APRIL** Plant exhibition onions and leeks outdoors. All vegetable plants can now be planted outside once plants become ready. Sow leeks and winter brassica indoors for planting later.

**MAY** From mid month plant tomatoes outdoors and courgettes if danger of frost has gone. Sow salad crops in succession. Courgettes, marrows, squash and pumpkin planted. Water all crops when necessary. Check for pests and treat as needed. Peas and beans may now be sown direct outdoors.

**JUNE** Make sure exhibition vegetables are kept watered. Plant 1<sup>st</sup> winter vegetables. Keep good water supply to all varieties of beans to help with setting.

**JULY** Lettuce sown outdoors. Sow 1st winter lettuce. Spring cabbage sown. Plant winter vegetables including the overwintering onion sets. 2nd crop potatoes. Harvest small onions. To have good quality dry onions, harvest early. Pull the

onions and cut the tops off, approx 10cm above the bulb for small onions and 15cm for the large. Take off the root and any split skins. Dry indoors (dry shed or greenhouse bench). Wait until the outer skin is dry, store in a cool dry airy place. Do not leave onions outside once pulled; this will affect the keeping qualities.

**AUGUST** Harvest large onions and tender crops prior to frost. Sow winter salad vegetables. Plant overwintering onion sets from end of month. Move late planted potatoes under protection.

**SEPTEMBER** Garlic, over wintering onions and Spring Cabbage planted. Prepare exhibition onion and leeks ground for following season. Sow winter salad greens in greenhouse.

**OCTOBER** Tidy vegetable plot of any debris. Clean greenhouse. When composting garden refuse, do not compost any with disease. Tomato and potato tops which have had blight must be disposed of or burnt not composted. Harvest carrots and beetroot and store in a cool area.

**NOVEMBER** Wash canes and pots to remove insects. Red Spider mite will overwinter in canes. Check stored onions for decay.

**DECEMBER** Boxing Day the traditional day for sowing Mammoth Onions. Review the year's crops and make notes for new season

**# DENOTES VARIETIES EXCLUSIVE AND MAINTAINED BY US**

**△ DENOTES PERENNIAL VEGETABLES.**

**H DENOTES HERITAGE VEGETABLES**

**For updates and new varieties go to [www.mammothonion.co.uk](http://www.mammothonion.co.uk)**



## **POTATO WEEKEND** **AT THE NURSERY**

**Sat 1st & Sun 2nd**  
**FEBRUARY 2025**

**10am-2pm**

**Over 60 varieties to choose from.**

**Planting advice on all types of  
vegetables given.**

**Also available will be early seedlings  
of our mammoth onions, leeks and  
many types of vegetables for your  
greenhouse, as well as our full range  
of seeds.**

## **NEW FOR 2025**

**BONUS F1 ONION NEW**  
**order code 0003**

Uniform medium sized onion with a round shape and golden skin. This sweet, mild, less pungent onion is extremely versatile and ideal for using raw or cooked. Early maturing, showing a good tolerance to downy mildew.

**50 seeds £2.75**



**KERAVEL - ROSE OF  
ROSCOFF ONION PLANTS NEW**

**20 Plants £25.00 order code P28**

**BELOW ZERO F1 LEEK NEW**  
**order code 0018**

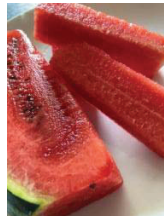
British Bred, with extreme cold tolerance to produce superb quality leeks that can withstand the harshest of winters. Pure white stems. **50 seeds £2.75**



**CHARLESTON GRAY  
WATERMELON NEW**  
**order code 0119**

Elongated shape with grey green skin. Flesh is crisp red and very sweet. Can be easily grown in containers. Indoor only.

**7 seeds £2.50**



**DELISTEM F1 CALABRESE NEW**  
**order code 0078**

Technically a sprouting kale, producing dark green spears on edible stems. Pinching out the first head at an early stage encourages the side shoots to develop. Maturing after approximately 90-100 days.

**20 seeds £2.25**



**COMFREY NEW**  
**order code M5**

A perennial plant, its leaves can be harvested several times a season. Can also be used as a mulch, or to make a liquid manure. Happy in the sun or shade, rich in potassium, good for feeding flowers and fruit, also contains phosphorus and nitrogen. Once you've made your liquid feed it will be higher in general nutrients than manure.

**50 seeds £2.00**



## ALLIUM- Onion and Leek

For plants see order codes  
S1-16 or P1-33

## MAMMOTH IMPROVED ONION

# H

order code 0001

Grown for many years this onion has now reached a high standard of vigour and uniformity. May be grown to over 2kg and 60cm circumference, has a very sweet flavour.

The 'exhibitors' onion, winning many prizes from the late 1800s to the present day.

100 seeds £4.75



## RIJNSBURGER ONION

order code 0002

A tennis ball size golden coloured onion, strong in taste. Will store from August through the winter till March.

100 seeds £2.25

## BONUS F1 ONION **NEW**

order code 0003

Uniform medium sized onion with a round shape and golden skin. The sweet, mild, less pungent flesh is extremely versatile and ideal for using raw or cooked. Early maturing, showing a good tolerance to downy mildew.

50 seeds £2.75



Bonus F1

## AILSA CRAIG ONION H

order code 0004

Will produce a mild sweet globe shaped onion of medium size.

100 seeds £2.25

## SANTERO F1 ONION

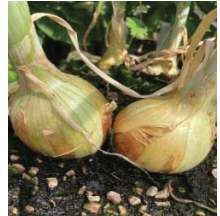
order code 0005

Produces good sized round bulbs. Resistant to Downy Mildew. 50 seeds £2.50

Also available as sets, order code 0298



Santero



Ailsa Craig

## MAMMOTH RED ONION

RHS HC # H

order code 0006

This is the largest red onion in cultivation, has excellent keeping qualities and is famous for its strong taste. 100 seeds £3.50



## RED BARON ONION RHS AGM

order code 0007

A tennis ball size onion with deep red skin has attractive red internal colour which makes it ideal for salads. Will store after harvesting through the winter till March.

100 seeds £2.25



Red Baron Onion



Keravel Onion

## **KRAVEL (Rose of Roscoff) ONION**

**order code 0008** **H**

We are pleased to offer seeds of this pink 17<sup>th</sup> century French Heritage variety. Has given good results with a superb flavour.

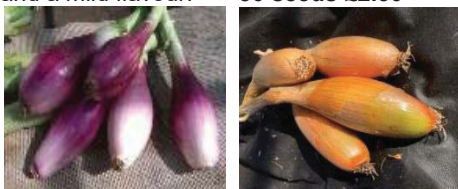
**50 seeds £3.25**

**Plants available in April see order code P28**

## **LONG RED FLORENCE ONION H**

**order code 0009**

A tall almost oval shaped onion with pink skin and a mild flavour. **50 seeds £2.50**



Long Red Florence Tosca

## **TOSCA ONION**

**order code 0010**

A tall almost oval shaped onion with golden skin and a mild flavour.

**50 seeds £2.50**

## **SENSHYU YELLOW ONION**

**order code 0011**

Autumn sown semi-globe shaped onion. Matures June to July from an August sowing.

**100 seeds £2.50**

**Sets available from September.**



Senshyu Yellow

## **TOUGHBALL F1 ONION**

**order code 0012**

Maturing early summer. Produces very uniform, round medium sized globes with strong skin. Firm flesh, high yielding and strong against bolting. Good variety for exhibition. Sow July-September.

**100 seeds £2.50**

**Order online at [mammothonion.co.uk](http://mammothonion.co.uk)**

## **WHITE LISBON Spring Onion**

**RHS AGM** **H**

**order code 0013**

Will produce good white lengths. Ideal for salads. Good for early and successive sowings.

**100 seeds £2.00**

## **REDBEARD Spring Onion**

**order code 0014**

Strong flavour with good stems of red. Sow from January under cover, outdoors from April.

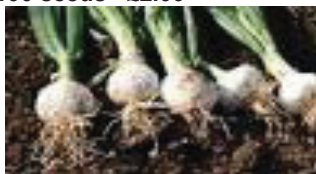
**100 seeds £2.00**

## **PARIS SILVERSKIN Spring Onion H**

**order code 0015**

White Salad onion which will produce a small bulb at base. May be left to grow to produce pickling onions.

**100 seeds £2.00**



Paris Silverskin

## **AMBITION F1 SHALLOT**

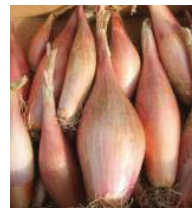
**order code 0016**

A red shallot which may be grown from seed. Sown directly outdoors or in trays.

**50 seeds £2.50**



Ambition Shallot



Zebrune Shallot

## **ZEBRUNE SHALLOT AGM**

**order code 0017**

Banana shallot from seed with good resistance to bolting. Produces brown bulbs with a pink tinge.

**50 seeds £2.50**

## BELOW ZERO F1 LEEK **NEW**

order code 0018

British Bred, with extreme cold tolerance to produce superb quality leeks that can withstand the harshest of winters. Pure white stems.

50 seeds £2.75



Below Zero

## MAMMOTH BLANCH LEEK RHS AGM

order code 0019 # H

A superior exhibition variety with an extra long blanch, very tall, may be grown to over 3kg. Excellent flavour for kitchen use. Frost hardy.

100 seeds £3.50



## MAMMOTH POT LEEK RHS AGM # H

order code 0020

A true pot leek, very broad flags with a short blanch of 14cm. Bred for the exhibitor, but with excellent flavour and tight flesh is ideal for the kitchen. One of the easiest leeks to grow, very frost hardy.

100 seeds £3.50



## JOLANT LEEK RHS AGM

order code 0021

A fine growing frost hardy leek, ideal for kitchen use during winter months. Can be sown from February to April.

100 seeds £2.25

## LANCASTER F1 LEEK

order code 0022

Late season variety. Dark green foliage with erect leaf habit and excellent uniformity. Frost hardy and bolt tolerant.

50 seeds £2.25

## NIPPER LEEK

order code 0023

Specially bred to produce quick growing baby leeks. Can be ready in 10 weeks from sowing and may be grown in containers.

50 seeds £2.00

## AUBERGINE

### MONEY MAKER F1 Aubergine

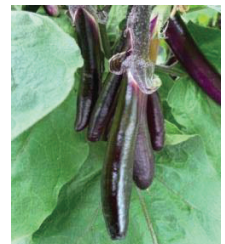
order code 0024

Long purple fruit with good flavour. A tall plant best grown under protection.

10 seeds £2.25



Money Maker



Farmers Long

### FARMERS LONG Aubergine

order code 0025

Long slender lilac fruit, on a medium height plant.

10 seeds £2.25

### PINSTRIBE Aubergine

order code 0026

Compact plant producing purple and white striped fruit, superb flavour.

10 seeds £2.25





Pinstripe



Baby Belle

### **BABY BELLE Aubergine**

**order code 0027**

Produces small round purple fruit with a lovely flavour. Compact plant.

**7 seeds £2.50**

## **BEANS - All types**

### **LAB LAB BEAN RUBY MOON**

**order code 0028**

Striking purple flowers and beans. The Lab Lab bean is a tender plant and is best grown indoors or in a sheltered position in cooler areas. **10 seeds £2.50**



Ruby Moon

### **YARD LONG CLIMBING BEAN**

**order code 0029**

Also known as the asparagus bean. Produces very long beans with fine flavour. Is best grown under protection.

**25 seeds £2.25**



Yard long

### **EDAMAME BEAN**

**order code 0030**

Edamame Beans (Soya Bean) are an excellent source of protein. Can be eaten boiled, steamed or stir fried. In all these forms they are delicious and nutritious. Will give a long crop from late summer to autumn when grown in a sunny position.

**30 seeds £2.50**



Edamame

### **ROB ROY # H CLIMBING FRENCH BEAN**

**order code 0031**

A climbing French bean, cream background splashed with red. Very tender when cooked. Older pods may be shelled. Very attractive, ideal for containers on the patio.

**25 seeds £2.25**



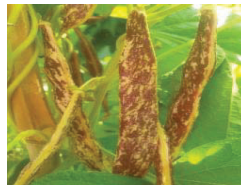
Rob Roy

### **ROB SPLASHED # H CLIMBING FRENCH BEAN**

**order code 0032**

A climbing French bean, cream background splashed with Purple. Very tender when cooked, the older pods may be shelled. Good flavour. Very colourful, ideal for containers.

**25 seeds £2.25**



Rob Splashed

**KINGSTON GOLD RHS AGM #**  
**CLIMBING FRENCH BEAN**  
**order code 0033**

Has cream/yellow pods which are very tender with a buttery taste. The plants produce a large crop from top to bottom. Suitable for containers. **25 seeds £2.25**



Kingston Gold

**COSSE VIOLETTE H**  
**CLIMBING FRENCH BEAN**  
**order code 0034**

Producing long tender purple pods. The beans revert to green when cooked. Makes an attractive addition to the garden. **25 seeds £2.10**



Cosse Violette

**KENTUCKY WONDER H**  
**CLIMBING FRENCH BEAN**  
**order code 0035**

Produces lots of green, very fleshy pencil podded beans of good flavour. Freezes well. Will keep cropping over a long period. **25 seeds £2.10**

**MIXED PACKET OF**  
**CLIMBING FRENCH BEAN**  
**order code 0036**

**Kingston gold, Kentucky wonder and Cosse Violette**  
**40 seeds £3.00**

**THE HUNTER RHS AGM**  
**CLIMBING FRENCH BEAN**  
**order code 0037**

Flat tender green beans. Mild flavour. Suitable for growing under poly-tunnels or greenhouses. **25 seeds £2.10**

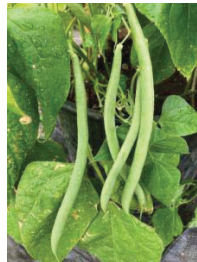


The Hunter

**COBRA**  
**CLIMBING FRENCH BEAN**

For indoor or outdoor production. Long, round fine pods with smooth exterior. Can be harvested over a long period. Ideal for the show bench.

**25 seeds £2.10 order code 0038**  
**50 seeds £3.00 order code 0039**



Cobra

**FARADAY DWARF FRENCH BEAN**  
**order code 0040**

Produces excellent uniform pencil pods which are 6-8mm in diameter and 13-15cm long. Resistant to Halo blight, Anthranose and BCMV.

**40 seeds £2.10**



Faraday

**PURPLE TEEPEE  
DWARF FRENCH BEAN**  
order code 0041

Dwarf plant with striking purple beans appearing above the foliage.

**40 seeds £2.10**



**Purple Teepee**

**THE PRINCE RHS AGM  
DWARF FRENCH BEAN**  
order code 0042

Dwarf French Bean producing good quality pencil podded beans. Stringless when picked young. **40 seeds £2.10**

**ORINOCO  
DWARF FRENCH BEAN**  
order code 0043

Straight golden yellow beans on a dwarf plant. Good resistance to Common Mosaic Virus, Anthranose and Halo blight. Sweet flavour. **40 seeds £2.10**



**Orinoco**

**MIXED PACKET OF  
DWARF FRENCH BEANS**  
order code 0044

Faraday, Purple Teepee and Orinoco. **60 seeds £3.00**



**Mixed Dwarf**

**LIBERTY RUNNER BEAN RHS AGM**



**# H**

This quality runner bean has given great satisfaction and produced many outstanding crops, for either exhibition or table. Produces very long beans with smooth thick tender flesh. Red Flowered.

**10 seeds £1.75 order code 0045**

**20 seeds £2.95 order code 0046**

**WHITE LADY RUNNER BEAN**  
order code 0047

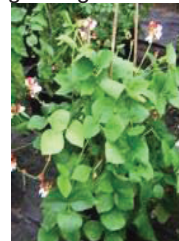
Produces long smooth pods with good flavour. Pure white flower. **15 seeds £2.00**



**White Lady**

**HESTIA DWARF RUNNER BEAN**  
order code 0048

A dwarf runner bean with red and white flowers. Very suitable for container and patio growing. **25 seeds £2.00**



**Hestia**



## MARTOCK BROAD BEAN H

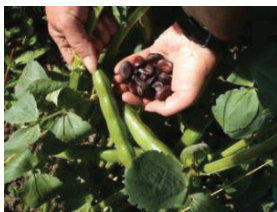
order code 0049

A heritage variety dating back to the 1300's. Medium tall plant, small pods of a mealy taste. **25 seeds £3.00**

## GRANDO VIOLETTO BROAD BEAN H

order code 0050

Unusual variety. The beans turn to purple on maturity, pods remain green. Medium tall with good flavour. **25 seeds £3.00**



Grando Violetto

## RED/CRIMSON FLOWERED BROAD BEAN H

order code 0051

Heritage variety dating back to the 1800's medium tall, small upright pods with excellent flavour. **25 seeds £3.00**



Red/Crimson Flowered

## AQUADULCE CLAUDIA BROAD BEAN H

order code 0052

Hardy variety ideal for autumn/winter sowing. Tall plant with long pods up to 20cm long.

**25 seeds £2.50**

## RED EPICURE BROAD BEAN H

order code 0053

Unusual tall variety with pink seeds which keep their colour when cooked. Good flavour.

**25 seeds £2.50**

Order online at [mammothion.co.uk](http://mammothion.co.uk)



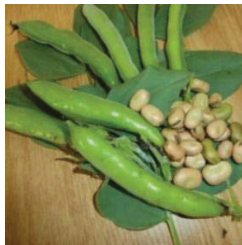
Red Epicure

## STEREO BROAD BEAN

order code 0054

This rather unusual bean will produce small pods with white beans inside. May be eaten whole or shelled. MEDIUM tall plant.

**25 seeds £2.50**



Stereo

## BUNYARDS EXHIBITION BROAD BEAN H

order code 0055

Tall growing, producing a heavy crop of long beans with a sweet taste, may be sown Spring or Autumn.

**25 seeds £2.50**

## THE SUTTON BROAD BEAN H

order code 0056

Dwarf variety producing a good crop of quality beans. Sown spring or autumn. Can be grown in pots.

**25 seeds £2.50**

## BRASSICA

Brussels Sprouts- Broccoli- Cabbage- Cauliflower- Kale.

## HISPI F1 CABBAGE

order code 0057

A small pointed cabbage with sweet flavour. May be sown from February to July. Can be grown in containers.

**20 seeds £2.25**



Hispi



Minicole

### MINICOLE F1 CABBAGE

**order code 0058**

Will produce very small round heads of tasty cabbage during the summer months.

**20 seeds £2.25**

### STONEHEAD F1 CABBAGE RHS AGM

**order code 0059**

Versatile round cabbage for Summer or Autumn use, will mature in 80 days. Very solid hearts, excellent flavour, mildew resistant.

**50 seeds £2.50**



Stonehead

### ROBINSONS CHAMPION GIANT CABBAGE # H

**order code 0060**

A giant round cabbage which matures during the Autumn, has an excellent full flavour ideal for coleslaw or cooking. Amazing sizes may be grown from this variety.

**30 seeds £2.75**



Giant Cabbage

### ROBIN F1 CABBAGE RHS AGM

**order code 0061**

A winter hardy January King type with a wonderful flavour. Robin may be left outside until needed, frost hardy.

**30 seeds £2.25**



Robin F1

### SAVOY CABBAGE H

**order code 0062**

Will produce dark green heads with good flavour for late autumn or winter use. Frost hardy.

**30 seeds £2.25**

### RED JEWEL CABBAGE

**order code 0063**

Good quality variety for Spring or Autumn sowing. Drumhead type.

**30 seeds £2.10**



Red Jewel



Kalibos

### KALIBOS RED CABBAGE H

**order code 0064**

An unusual pointed variety. Slow to bolt. May be sown early till mid-summer. Good flavour when eaten raw.

**30 seeds £2.10**

### DURHAM EARLY CABBAGE H

**order code 0065**

Will provide dark green spring greens with a medium sized conical head. Frost hardy. Sow from July to October.

**30 seeds £2.00**



Durham Early

### KILATON F1 CABBAGE

**order code 0066**

**CLUB ROOT RESISTANT**

High yielding autumn/winter cabbage with good green colour even after storage.

**20 seeds £4.25**

## CLAPTON F1 CAULIFLOWER

order code 0067

### CLUB ROOT RESISTANT

Good quality white curds carried high off the ground to keep clean.

20 seeds £4.25

## AALSMEER CAULIFLOWER H

order code 0068

Overwintering type with good white curd.

April heading from a May-June sowing.

30 seeds £2.25



Aalsmeer

## DOK ELGON CAULIFLOWER # H

order code 0069

This variety has given many stunning results, very white florets. May be sown from January onwards for Summer & Autumn.

30 seeds £3.25

## FLAMENCO F1 CAULIFLOWER

order code 0070

Produces good sized white heads of quality.

May be sown Feb-May. Harvest July-Oct.

25 seeds £3.00

## BORIS F1 CAULIFLOWER

order code 0071

Will produce quality curds from summer to early autumn.

25 seeds £3.25



Boris



Igloo

## IGLOO CAULIFLOWER

order code 0072

Produces small white heads. Ideal for containers.

25 seeds £2.50

## CRISPUS F1 BRUSSELS SPROUT

order code 0073

### CLUB ROOT RESISTANT

Produces small tight buttons with good dark green colour. Frost hardy.

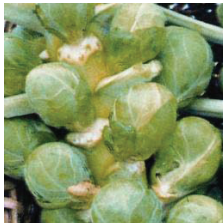
20 seeds £4.25

## EARLY 1/2 TALL BRUSSELS SPROUT

order code 0074

Shorter growing variety maturing from late Autumn. A good replacement for Peer Gynt.

30 seeds £3.00



Early 1/2 Tall

## IGOR F1 BRUSSELS SPROUT RHS AGM

order code 0075

Fantastic flavour and crop. Very frost hardy, harvest from November onwards. Medium height with dark green tight sprouts.

25 seeds £3.25

## KALETTE - FLOWER SPROUT

order code 0076

Flower sprouts are a cross between Kale & Brussels Sprout with loose button rosettes all the way to a frilly-leaved top. The flavour is milder and sweeter than a Brussels Sprout.

An ideal winter vegetable.

20 seeds £2.95

## CHEVALIER F1 CALABRESE

RHS AGM

order code 0077

Green headed summer broccoli, medium size head followed by secondary spears.

Harvest from June. 30 seeds £2.25



Chevalier



## **DELISTEM F1 CALABRESE** **NEW** order code 0078

Technically a sprouting kale, producing dark green spears on edible stems. Pinching out the first head at an early stage encourages the side shoots to develop. Maturing after approximately 90-100 days.

**20 seeds £2.25**

## **EARLY PURPLE SPROUTING BROCCOLI** RHS AGM H order code 0079

A frost hardy winter vegetable which produces large quantities of good flavoured spears from March to May.

**30 seeds £2.25**

## **KALE REDBOR F1** RHS AGM order code 0080

Red curled kale, ideal for winter use. Pick from November to March. Very frost hardy.

**20 seeds £2.00**



Nero de Toscana



Redbor

## **KALE NERO DE TOSCANA** **H** order code 0081

Narrow dark green leaves with a fine flavour and high vitamin content. Pick from October to March. Very frost hardy. **20 seeds £2.00**

## **KALE GREEN SCOTCH CURLED** **H** order code 0082

Curled leaves of good flavour. Frost hardy, will stand all winter. A cut and come again vegetable.

**20 seeds £2.00**



Green Scotch Curled

## **KALE RED RUSSIAN** order code 0083

Large cut leaves with a red tinge providing a decorative vegetable for winter months. Ideal for containers.

**20 seeds £2.00**



Red Russian

## **CELERY**

### **MAMMOTH WHITE CELERY** RHS HC # H order code 0084

Very quick growing trench celery, producing very thick solid heads. A crisp celery with excellent taste. Great for the show bench. Needs blanching.

**50 seeds £3.50**

### **MAMMOTH PINK CELERY** RHS AGM # H order code 0085

A strong growing trench celery with excellent taste. Producing tall very thick solid crisp heads with lots of sticks. Needs blanching.

**50 seeds £3.50**



Mammoth Pink celery

### **MARTINE CELERY** RHS HC # order code 0086

A tall red trench celery, which produces a large number of sticks per head, strong flavoured. Needs blanching.

**50 seeds £3.50**

## GOLDEN SELF BLANCHING CELERY H

order code 0087

Dwarf growing with cream-coloured stems. Sweet crisp flavour. No blanching required. 50 seeds £2.50

## GIANT PRAGUE CELERIAC order code 0088

Will produce large round roots with aromatic flavour. Harvest from September. Stores well once harvested. 75 seeds £2.50



Celeriac

## CHARD- SPINACH- AMARANTH

### RUBY CHARD H order code 0089

Thick stems of chard with a good deep colour. Cook leaves as spinach, stems can be stir- fried. Frost hardy. 50 seeds £2.00



Ruby



Canary Yellow

### CANARY YELLOW CHARD order code 0090

Bright yellow stems with good flavour. Will hold the colour when cooked. Frost hardy. 50 seeds £2.00

### ROSA CHARD order code 0091

Pale pink stems with good flavour. Cook leaves as spinach, stems can be stir- fried. Slow to bolt. Frost hardy. 50 seeds £2.00

### RAINBOW CHARD order code 0092

A mixture of all colours which will provide thick bright coloured stems. Cook leaves as spinach. Frost hardy. 50 seeds £2.00



Rainbow Chard

### FORDHOOK GIANT CHARD H order code 0093

White stems with good flavour. Cook leaves as spinach, stems can be stir- fried. Slow to bolt. Frost hardy. 50 seeds £2.00



Fordhook Giant



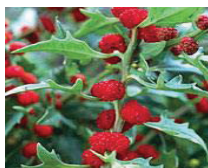
Perpetual spinach

### PERPETUAL SPINACH H order code 0094

Good growing variety with high drought tolerance. Maybe sown early or late season for winter use. Frost hardy. A cut and come again vegetable. 50 seeds £2.00

### STRAWBERRY SPINACH H order code 0095

An unusual spinach producing heart shaped leaves and spikes bearing strawberry like fruit on maturity. Will self-seed. 50 seeds £2.00



Strawberry Spinach



Mexican Tree Spinach

### MEXICAN TREE SPINACH order code 0096

Tall growing with pink leaves when young turning green on maturity. Will self-seed. 50 seeds £2.00

## REDDY F1 SPINACH

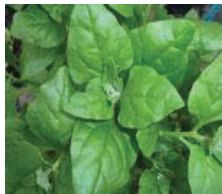
order code 0097

A unique variety with red stems and veins. Can be used in salads when young.

50 seeds £2.00



Reddy



New Zealand Spinach

## NEW ZEALAND SPINACH H

order code 0098

A fleshy annual spinach from New Zealand. Will grow to approx. 60cms tall.

50 seeds £2.00

## CALLALOO- JOSEPHS COAT

order code 0099

Unusual leaf vegetable popular in Caribbean cooking. Can grow to 2 metres tall. Use in salads and stir fries.

50 seeds £2.50



Callaloo Josephs coat

## AMARANTH-VARIEGATED

order code 0100

Tall leafy vegetable. Use in salads when young or cooked in stir fries when leaves mature.

100 seeds £2.00



Variegated



Red Army

## AMARANTH – RED ARMY

order code 0101

Tall plant with dark red leaves. Use like spinach or in salads.

100 seeds £2.00

## CUCURBITA

### Cucumber-Marrow-Pumpkin-Squash

## KING GEORGE CUCUMBER RHS HC H #

order code 0102

Very long with dark green skin this large indoor cucumber has won many prizes on the show bench. Well known for the sweet taste and small central seed core. Open pollinated, the male flowers should be removed.

10 seeds £4.50



King George Cucumber

## DIANA F1 CUCUMBER (All Female)

order code 0103

Mid-season variety with strong root system. Will produce medium sized fruit with good colour. 5 seeds £4.75



Diana

## CARMEN F1 CUCUMBER (All Female)

order code 0104

Will produce medium sized fruit with good colour and flavour. High resistance to mildew.

5 seeds £4.75



## PASSANDRA F1 CUCUMBER

(All Female) order code 0105

Produces small fruits 15-20cms long, ideal for growing in pots or containers. Good resistance to cucumber mosaic virus, tolerant to powdery and downy mildew.

5 seeds £4.75

## DELISTAR F1 CUCUMBER

(All Female) order code 0106

A short variety with a crunchy sweet taste. They have a very thin skin, which means it is less likely to cause digestive problems when the skin is eaten.

5 seeds £4.75



Delistar F1

## GREEN FINGER F1 CUCUMBER

(All Female) order code 0107

Will produce tasty smooth fruit 10-12cms long. May be grown outdoors.

5 seeds £2.50



Green Finger

## CRYSTAL LEMON CUCUMBER H

order code 0108

Apple shaped fruit with pale yellow coloured skin, wonderful sweet taste.

7 seeds £2.50



Crystal Lemon

## PERFECTION CUCUMBER

order code 0109

Dark green fruit suitable for growing outdoors or in a polytunnel.

10 seeds £2.50

## LUFFA H

order code 0110

A tall growing plant which must be grown indoors on a frame.

5 seeds £2.50

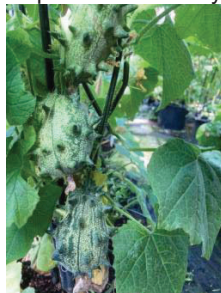


Luffa

## KIWANO (HORNED MELON)

order code 0111

An unusual melon/cucumber. Small fruit with solid spines. Indoor only. 10 seeds £2.50



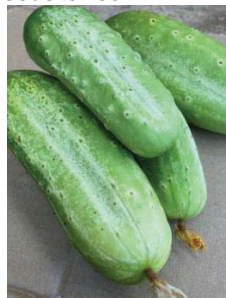
Kiwano

## PARTNER F1 GHERKIN **NEW**

order code 0112

Fast growing small spiny cucumber suitable for pickling. Can be grown outdoors during summer months.

7 seeds £2.50



Partner F1

## **CAIGUA** (pronounced kai-wa)

**order code 0113**

An herbaceous vine grown for its edible fruit. Known also as slipper gourd or stuffing cucumber. Great filled with a spicy or cream cheese filling. Indoor only.

**5 seeds £2.50**



Caigua

## **CUCAMELON**

**order code 0114**

Unusual small fruit. Melon like in shape but tastes like a cucumber. Indoor only

**10 seeds £2.50**



Cucamelon

## **TRICHOSCANTHES- SNAKE GOURD**

**order code 0115**

Unusual tropical fruit. A vine like plant produces long snake like fruit. The attractive flower is pure white and highly scented.

**5 seeds £3.00**



Trichoscanthes

## **KARELLA (Bitter Gourd) H**

**order code 0116**

Unusual fruit on a trailing plant. Has a bitter taste.

**10 seeds £2.50**

## **MALAGA F1 MELON**

**order code 0117**

Ribbed fruit with thick, deep orange juicy flesh.

**10 seeds £2.50**



Malaga



Champagne

## **CHAMPAGNE F1 WATERMELON**

**order code 0118**

Small watermelon with YELLOW flesh. Easily grown in containers. Indoor only.

**7 seeds £2.50**

## **CHARLESTON GRAY WATERMELON**

**NEW**

**order code 0119**

Elongated shape with grey green skin. Flesh is crisp red and very sweet. Easily grown in containers. Indoor only.

**7 seeds £2.50**



Charleston Gray

## **BIG MAX PUMPKIN**

**order code 0120**

Bright orange skin, firm flesh with a sweet taste, will tolerate cool growing conditions and still produce a giant result

**8 seeds £2.50**

## **SUMO GIANT PUMPKIN**

**order code 0121**

Bright orange coloured skin and very solid flesh, perfect for a competition.

**5 seeds £3.50**

**Order online at [mammothion.co.uk](http://mammothion.co.uk)**



Sumo

## DILL'S ATLANTIC GIANT PUMPKIN

order code 0122

Holds many world heavyweight records, perfect for competitions.

5 seeds £3.50

## HARVEST MOON F1 PUMPKIN

order code 0123

An early maturing and compact plant that produces fruits typically 4-5Kg in size.

7 seeds £2.50

## GIANT LONG GREEN TRAILING MARROW H

order code 0124

This trailing marrow will develop long green fruit, a strong growing strain, ideal for winter storage. 10 seeds £2.50



Long Green Trailing

## LONG GREEN BUSH MARROW

order code 0125

Will provide smaller, good quality marrows in less space than the trailing variety.

7 seeds £2.00

## VEGETABLE SPAGHETTI

order code 0126

Looks similar to an oval marrow but cooked whole, and when the flesh inside is scooped out it looks like spaghetti. When uncooked, it looks like a normal marrow inside.

It can be boiled, baked or fried, the strands can be used as a substitute for pasta,

7 seeds £2.00

## GENOVESE COURGETTE

order code 0127

Quick to mature giving light green courgettes, and will continue to fruit over a long period.

Bush Habit.

7 seeds £2.00

## GOLDRUSH F1 COURGETTE

order code 0128

Produces lots of long bright golden fruit on bush plant.

7 seeds £2.00

## TONDO CHIARO DI NIZZA COURGETTE

order code 0129

A pale green round courgette. Very sweet flavour. Is best picked when fruit is small.

7 seeds £2.00



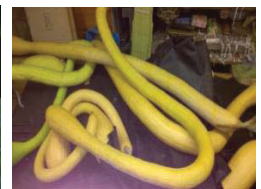
Tondo Chiaro Di Nizza

## TROMBONCINO H

order code 0130

Unusual cream coloured long fruit with trailing habit, may be grown up supports or even an archway. Can be left to mature to store as a squash. Suitable for containers.

7 seeds £2.25



Tromboncino young and mature

## SHOOTING STAR F1 COURGETTE

order code 0131

The first golden climbing courgette. Suitable for growing up a trellis or fence. Produces an abundance of long golden fruits. Superb flavour.

5 seeds £2.50





Shooting Star



Black Forest

## BLACK FOREST F1 COURGETTE

**order code 0132**

A climbing variety, suitable for a trellis or fence, producing an abundance of dark green fruits. Superb flavour.

**5 seeds £2.50**

*Squashes are one of the most under rated vegetables, easy to grow; very few pests attack the plants. One of the most important factors is their flavour and versatility, they may be used in many ways, soups, stews, roasted etc.*

*Used when the skins are tender during the summer and autumn, but many varieties can be stored for winter use.*

## SUNBURST SQUASH

**order code 0133**

Summer type. Yellow scallop shape, bush habit. Can be used as a patty pan.

**7 seeds £2.00**

## ONION SQUASH

**order code 0134**

Summer type. Golden onion shaped. Deep golden flesh, trailing habit

**7 seeds £2.00**



Onion

## SWEET DUMPLING SQUASH

**order code 0135**

A good storing variety, white with green stripe. Half trailing habit.

**7 seeds £2.00**



Sweet Dumpling

## TURKS TURBAN SQUASH H

**order code 0136**

A storing type. Cottage loaf shape, trailing habit.

**7 seeds £2.00**



Turks Turban

Crown Prince

## CROWN PRINCE F1 SQUASH

**order code 0137**

Pale green pumpkin shaped fruit with orange flesh. Superb flavour. Trailing habit. Stores well for winter use.

**5 seeds £2.00**

## LITTLE GEM SQUASH H

**order code 0138**

A storing type. Small round green fruit the size of a cricket ball, trailing habit.

**7 seeds £2.00**



Little Gem



Butternut

## BUTTERNUT SQUASH

**order code 0139**

Storing type. Very popular with a good flavour, trailing habit.

**7 seeds £2.00**

## SWEET MAMA F1 SQUASH

order code 0140

Green kabocha type with orange flesh. Trailing habit good flavour, stores well.

5 seeds £2.00



Sweet Mama

## TABLE STAR SQUASH

order code 0144

A high sugar 'Acorn' squash. Dark green heart shaped fruits with ribs on the outside, and thick sweet orange flesh on the inside.

7 seeds £2.00



Table Star



Marina di Chioggia

## MASHED POTATO SQUASH

order code 0141

A white acorn type winter squash with white flesh. Looks like mashed potato when cooked and fluffed. Try these mashed, baked, steamed or roasted.

5 seeds £2.00



Mashed Potato

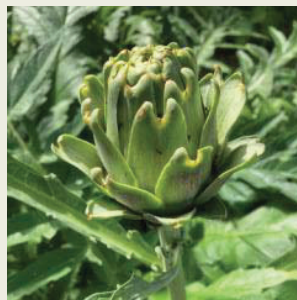
## MARINA DI CHIOGGIA SQUASH

order code 0145

Medium sized flattened globe shaped fruit with knobbly grey/green skin on trailing vine. Orange flesh with good flavour which improves with storage.

7 seeds £2.00

## GLOBE ARTICHOKE & CARDOON SEEDS



For plants see order code 0313 - 0317

## MIXED SELECTION SQUASH

order code 0142

A mixture of varieties some bush some trailing.

12 seeds £3.25



Mixed Patty Pan



Mixed Squash

## MIXED PATTY PAN SQUASH

order code 0143

Mix of golden, white and green patty pan summer squash with nutty flavour.

All bush plants.

9 seeds £2.50

## GLOBE ARTICHOKE

GREEN GLOBE  $\Delta$  H

order code 0146

Green heads of a good size, on a compact plant. 20 seeds £2.50

## GLOBE ARTICHOKE

ROMANESCO  $\Delta$

order code 0147

Purple-tinged heads of a fine flavour.

20 seeds £2.50

## GLOBE ARTICHOKE VIOLETTO DI CHIOGGIA $\Delta$

order code 0148

Unusual striking purple heads with silvery green leaves. **20 seeds £2.50**

## CARDOON H

order code 0149

A large stalky vegetable related to the artichoke, popular in France, Italy and Spain. **25 seeds £2.50**

## LETTUCE

### ROBINSON LETTUCE RHS AGM

order code 0150

Very crispy Webb's type lettuce with an exceptionally sweet taste. Has some root aphid resistance. Bolt and Mildew resistant in hot weather. **50 seeds £2.10**



Robinson

### LITTLE GEM LETTUCE RHS AGM

order code 0151

Dwarf compact habit. Good quality crisp leaves. Can be grown in containers. **50 seeds £2.00**

### COS LETTUCE H

order code 0152

Produces large crispy heads. Slow growing with good flavour.

**50 seeds £2.00**

### BUTTERCRUNCH LETTUCE

order code 0153

Small slightly upright with dense heads and crispy texture. **50 seeds £2.00**

### SWEET SALAD LEAVES

order code 0154

A mixture of sweet green and red leaves to cut and come again. Ideal for containers.

Can be sown January to August.

**50 seeds £2.00**



Mixed Salad Leaves

### ARCTIC KING & MARVEL OF 4 SEASONS LETTUCE

order code 0155

Mix of two varieties both winter hardy. Small compact heads forming a small heart.

**50 seeds £2.00**

### WINTER DENSITY LETTUCE

order code 0156

Semi-cos variety producing dark green leaves. Frost tolerant and ideal for autumn sowing.

**100 seeds £2.00**



Winter Density

### CORN SALAD VIT

order code 0157

Produces oval green leaves a good variety for spring and autumn harvest. Will overwinter.

**100 seeds £2.00**

### RED SALAD BOWL LETTUCE

order code 0158

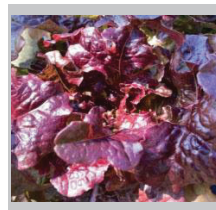
Large oak leaves to cut and come again.

Can be sown early under glass or outdoors during summer months.

**50 seeds £2.00**



Green Salad Bowl



Red Salad Bowl

## GREEN SALAD BOWL LETTUCE

order code 0159

As red but with bright green leaves.

50 seeds £2.00

## LOLLO ROSSA LETTUCE

order code 0160

Red leaved lettuce with deep frill. Can be sown early till late. Good flavour.

50 seeds £2.00



Lollo Rossa



Roxy

## ROXY LETTUCE

order code 0161

Red butterhead type with compact, heavy heads. Has a green base with uniform red edge and a crisp texture. For spring, summer and autumn cropping. Highly disease resistant.

50 seeds £2.00

## FRECKLES LETTUCE

order code 0162

Unusual lettuce with green leaves speckled with red. Makes a small heart. Is best grown outdoors during summer months

50 seeds £2.00



Freckles

## ORIENTAL SALAD LEAVES

order code 0163

Mixture of Mizuna, Mibuna and Mustards, strong flavoured leaves to cut and come again. Ideal for containers.

50 seeds £2.00

## KARAOKE F1 PAK CHOI

order code 0164

Large white heads with strong stems. Slow bolting, can be sown for all year production.

50 seeds £2.00

## AMERICAN LAND CRESS H

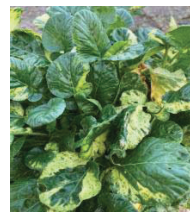
order code 0165

Similar in taste to watercress. Ideal for containers. Will grow under protection during winter months.

100 seeds £2.00



American Land Cress



Varigated land Cress

## VARIGATED AMERICAN LAND CRESS

order code 0166

As green version but with variegated leaves and milder taste.

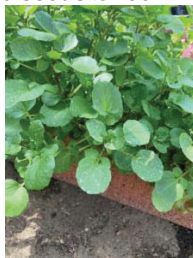
100 seeds £2.00

## WATERCRESS

order code 0167

Grown in moist compost to provide the peppery watercress taste without the running water. Ideal for containers.

100 seeds £2.00



Watercress

## ROCKET – SKY

order code 0168

Will produce lots of tasty leaves all summer and autumn. Slow to bolt. Can be sown till September. 100 seeds £2.00

Order online at [mammothion.co.uk](http://mammothion.co.uk)



## ROCKET – WASABI

order code 0169

Similar flavour to Wasabi and Horseradish. Strong textured dark green leaves with a different shape to the standard rocket.

100 seeds £2.00

## ENDIVE - PANCALIERI

order code 0170

Frizzy type with rose tinted white midribs. Sown March to October. Although grown like lettuce, it will withstand both heat and a few degrees of frost. Best if blanched a few days before harvesting.

50 seeds £2.00

## MICRO GREENS

### CHOP SUEY GREEN

order code 0171

Serrated leaf with unique aromatic flavour. Use in salads or try young leaves fried with bacon. A cut and come again crop.

200 seeds £2.50

### GARLIC KALE

order code 0172

Vigorous young green leaves with garlic flavour ideal for salads.

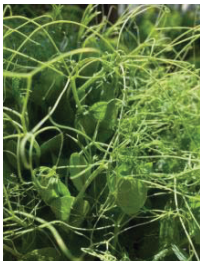
200 seeds £2.50

### PEA SHOOTS SAMISH

order code 0173

Tender shoots and tendrils for a flavoursome garnish or salad. Can be grown all year round.

100 seeds £2.50



Pea Shoots Samish

Order online at [mammothion.co.uk](http://mammothion.co.uk)

## PEAS

### CAROUBY DE MAUSSANE PEA H

order code 0174

Heritage variety. Tall growth up to 2 metres with a stunning purple and white flower. Produces large mange tout sugar pea pods.

50 seeds £2.50

### ALDERMAN PEA H

Tall plant, up to 2 metres, producing good sized pods with a sweet flavour.

50 seeds £2.50 order code 0175

100 seeds £4.50 order code 0176



Alderman

### NE PLUS ULTRA PEA H

A tall growing heritage variety, approx 2 metres, with a large crop of long rounded pods, has good resistance to mildew. Smooth seeded.

50 seeds £2.75 order code 0177

100 seeds £5.00 order code 0178



Ne Plus Ultra

### SHOW PERFECTION PEA H #

Tall growing approx. 2 metres, producing dark green long curled pods with a very sweet taste. Freezes well maintaining the flavour. Wrinkled seed.

50 seeds £2.75 order code 0179

100 seeds £5.00 order code 0180



Show Perfection

## PURPLE PODDED PEA H

Heritage variety dating from the 1800's. Produces purple flowers followed by purple pods. Grows to approx. 2 metres.

**50 seeds £2.75 order code 0181**

**100 seeds £5.00 order code 0182**



Purple Podded

## SHIRAZ PEA

**order code 0183**

The bi-colour flowers of the Shiraz pea form stunning flat **purple pods** that are best harvested when young. Resistant to Powdery & Downy Mildew. Height approx 1metre.

**50 seeds £2.25**



Shiraz

## ONWARD PEA RHS AGM H

Dwarf pea, 1 metre in height, producing pods of quality. Very prolific, sweet and uniform.

**50 seeds £2.25 order code 0184**

**100 seeds £3.75 order code 0185**



Onward

## DELIKETT PEA RHS AGM

**order code 0186**

Dwarf sugar snap pea with compact habit of 1 metre in height, with lots of dark green round pods. Stringless at picking stage.

**50 seeds £2.25**

## TOM THUMB (Half Pint) PEA

**order code 0187**

Grows to 8-9ins tall. Quick to grow and needs no support, will provide a tasty crop of sweet peas. Ideal for containers with good tolerance to cold.

**50 seeds £2.25**

## DOUCE PROVENCE PEA

**order code 0188**

Height approx 1 metre. Very hardy and reliable. Can be sown February to October to produce sweet flavoured peas on a compact plant.

**50 seeds £2.25**



Douce Provence

## CHARLIE PEA

**order code 0189**

A maincrop semi leafless variety producing a good yield of pods. The plants have a good resistance to powdery mildew. Ideal for later sowings. Height approx 1metre.

**100 seeds £2.25**

## ASPARAGUS PEA H

**order code 0190**

Self-supporting bush 45cm tall. The deep red flowers are followed by winged pods. Pick when approx 3cm long. Maybe stir fried, lightly boiled or eaten raw.

**30 seeds £2.00**

**Order online at [mammothion.co.uk](http://mammothion.co.uk)**

## PEPPERS Sweet + Hot

*We have a variety of CHILLI for every taste. They adapt very well to containers, some varieties are very attractive and look very much at home in a conservatory.*

*For more varieties visit our website.*

### JALAPENO CHILLI

order code 0191

This very hot chilli produces broad pointed fruit which turn from green to red, it makes a very compact plant and is very prolific.

10 seeds £2.10

### HABENERO (SCOTCH BONNET) CHILLI

order code 0192

Extremely hot; the fruit are the size of a large cherry and change from green to orange.

10 seeds £2.10



Habenero



Habenero Red

### HABENERO RED CHILLI

order code 0193

Extremely hot; the fruit are the size of a large cherry and change from green to red.

10 seeds £2.10

### BIG JIM CHILLI

order code 0194

Large green fruit approx 25cm which ripens to red. Medium Hot.

10 seeds £2.10



Big Jim

### PADRON CHILLI

order code 0195

Famous Spanish variety, if harvested at 4-5 cm long, the fruits are sweet, if left to grow they become hotter. Eaten in tapas, sautéed in olive oil with a little salt. 15 seeds £3.00

### PIROS F1 CHILLI

order code 0196

Anaheim type, turns from green to red.

Medium hot. 15 seeds £3.00



Piros

### BASKET OF FIRE F1 CHILLI

order code 0197

Short bushy plant which can be grown in a hanging basket. Ripens to red. Very hot.

10 seeds £2.10



Basket of Fire



Golden Cayenne

### GOLDEN CAYENNE CHILLI

order code 0198

Pointed fruit which ripens from green to yellow. Hot.

10 seeds £2.10

### AURORA CHILLI

order code 0199

Purple fruit turning through pale lemon to red on a medium height slender plant. Very hot.

10 seeds £2.10

Order online at [mammothion.co.uk](http://mammothion.co.uk)

## NEW MEX TWILIGHT CHILLI

order code 0200

Pale purple fruit very hot. Medium height plant, ideal for containers.

10 seeds £2.10

## RED CAYENNE CHILLI

order code 0201

Traditional hot chilli, long green fruit ripening to red.

10 seeds £2.10



Red cayenne

## BULGARIAN CARROT CHILLI

order code 0202

Green ripening to orange. Medium sized fruit with a hot fruity kick.

10 seeds £2.10

## NAGA CHILLI

order code 0203

Fruit ripening to red on a tall plant. Extremely hot. 5 seeds £3.00

## BANGALORE TORPEDO CHILLI

order code 0204

Very hot chilli giving long narrow fruit which turn from green to red. Dries easily for storage. 10 seeds £2.10

## HOT LEMON CHILLI

order code 0205

Hot Lemon is totally unique in that its flavour is as hot as a cayenne, and yet it has a distinctly tart citrus taste. Medium height plant.

10 seeds £2.10



Hot Lemon



Friars Hat

## FRIARS HAT CHILLI

order code 0206

Tall plant with unusual 'hat' shaped fruit. Pale green ripens to red. Hot.

10 seeds £2.10

## ORZOCO CHILLI

order code 0207

Tall plant with purple leaves and stem, small dark purple fruit which ripens to red. Very hot.

10 seeds £2.10

## FILIUS BLUE CHILLI RHS AGM

order code 0208

A real stunner, deep purple foliage and round fruit. Very hot. Great for containers.

10 seeds £2.10

## HUNGARIAN BLACK CHILLI

order code 0209

Small bullet shaped fruit on a tall plant. Deep purple ripening to red. Mild/medium heat.

10 seeds £2.10

## HUNGARIAN HOT WAX CHILLI

RHS AGM

order code 0210

Vigorous habit with long smooth waxy pale green fruit turning red when ripe. Mild.

10 seeds £2.10

## PRAIRIE FIRE CHILLI RHS AGM

order code 0211

A very bushy compact plant with small upright fruit ripening from cream to red. Perfect for containers. Very hot.

10 seeds £2.10



Prairie Fire



Carolina Reaper

## CAROLINA REAPER CHILLI

order code 0212

The hottest chilli in the world!

A tall plant with fruit which ripens to red. 5 seeds £3.00



## TANGERINE DREAM SWEET CHILLI

order code 0213

This chilli pepper is a rocket-shaped sweet pepper that matures to a vibrant orange when ripe.

10 seeds £2.50



Tangerine Dream

## MARCONI SWEET PEPPER

order code 0214

Long fruits with mild sweet flavour. Fruits ripen to red on maturity.

20 seeds £2.25



Marconi



Ringo

## RINGO SWEET PEPPER

order code 0215

Long green fruits with good flavour ripening to yellow. 20 seeds £2.25

## CALIFORNIAN WONDER SWEET PEPPER

order code 0216

Blocky fruit ripening to red.

20 seeds £2.25



D'asti Giallo



Californian Wonder

## D'ASTI GIALLO SWEET PEPPER

order code 0217

Large thick fleshed square shaped fruit ripening to yellow. Sweet flavour.

20 seeds £2.25

## SNACK BITE F1 SWEET PEPPER

order code 0218

Small very sweet snacking peppers in yellow, red and orange, each with a small seed cavity. 7 seeds £3.00

## ROOT VEGETABLES

### MAMMOTH LONG BEETROOT H #

order code 0219

Long tapered smooth quality roots. Very dark flesh of a sweet flavour, has won lots of prizes on the show bench.

50 seeds £3.25



Mammoth Long

### RED ACE BEETROOT RHS AGM

order code 0220

A beetroot with a smooth skin, very red internal colour, sweet tasting and is resistant to bolting in dry weather.

50 seeds £1.75



Red Ace

### PABLO F1 BEETROOT

order code 0221

Good internal colour with no white rings. Slow to bolt.

50 seeds £2.00



Pablo

Order online at [mammothonion.co.uk](http://mammothonion.co.uk)

## GOLDEN BEETROOT

order code 0222

Golden globe with sweet flavour. Does not bleed when cut.

50 seeds £2.00



Golden

## CYLINDRA BEETROOT H

order code 0223

A stump rooted variety which grows to 10cms in length. Smooth skinned with good bolt tolerance.

50 seeds £2.00

## CHIOGGIA BEETROOT

order code 0224

Traditional Italian globe shape. Has dark green leaves and red stems. When sliced the red and white rings are shown. Sweet taste.

50 seeds £2.00

## EXHIBITION LONG PARSNIP H

order code 0225

Very long tapered roots with fine flavour. The perfect variety for the exhibitor or cook.

100 seeds £2.00



Long Parsnip

## WHITE SPEAR PARSNIP

order code 0226

High yielding with smooth white skin.

100 seeds £1.75

## NANDOR F1 CARROT

order code 0227

A quality stump rooted carrot, very uniform crop. Deep orange colour, with no green shoulders and excellent flavour.

100 seeds £1.75



Nandor



Flyaway

## FLYAWAY CARROT

order code 0228

Good tolerance to carrot root fly. Broad stump with good colour and smooth skin.

100 seeds £2.00

## SWEET CANDLE CARROT

order code 0229

Will produce a long stump rooted carrot with sweet flavour. Suitable for exhibition.

100 seeds £2.00

## AUTUMN KING CARROT

order code 0230

Sow from July to the end of August for fresh tender carrots in the autumn months.

100 seeds £2.00



Autumn King

## PARIS MARKET CARROT

order code 0231

Almost round roots which have good colour and flavour. Ideal for production in shallow or stony soils and can be grown in pots.

100 seeds £1.75



Paris Market

## RAINBOW F1 CARROT

order code 0232

Rainbow F1 Hybrid Mix is a unique mixture of natural and vivid carrots, all with different root colours.

100 seeds £2.00

## ST. VALERY LONG CARROT

order code 0233 H

A tried and tested variety, with very long tapered uniform roots.

75 seeds £1.75



St Valery

## SNOWBALL TURNIP H

order code 0234

Small white turnip with tasty solid white flesh. Sow March to August. Quick to mature. Ideal for containers.

100 seeds £1.75



Snowball

## GOLDEN BALL TURNIP

order code 0235

Very hardy with golden flesh, suitable for spring and autumn sowing.

100 seeds £1.75



Golden Ball

## MARIAN SWEDE

order code 0236

Cream fleshed roots with purple top. Stores well. Good resistance to club root and mildew.

100 seeds £1.75

## TOPSI RADISH

order code 0237

Fast growing bright scarlet red round fruit. Sow indoors from January or outdoors from March to September.

100 seeds £2.00

## FRENCH BREAKFAST RADISH

order code 0238

A long quick growing variety with red and white skin. Sow outdoors from March.

100 seeds £2.00



French Breakfast

## CHINA ROSE RADISH

order code 0239

Long roots with a good flavour. Sow from March.

100 seeds £2.00



China Rose

## DELICACY WHITE KOHL RABI

order code 0240

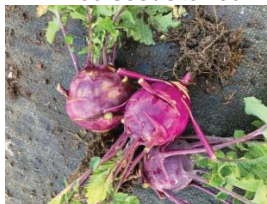
Semi globe roots of pale green. Very crisp white flesh.

100 seeds £2.00

## DELICACY PURPLE KOHL RABI

order code 0241

Semi globe roots of purple with tender white flesh. 100 seeds £2.00



Delicacy Purple

## SWEET FLORENCE FENNEL

order code 0242

Good variety with a short top. Quick growing and easy to transplant.

50 seeds £2.00

## SWEET CORN

### SWEET NUGGET F1 SWEET CORN

order code 0243

Medium height stems. Sets well in cooler conditions. Sweet Flavour. Plant outdoors from June.

25 seeds £2.50

### FIESTA SWEET CORN

order code 0244

An 'Indian' variety producing multi coloured cobs for pop-corn.

25 seeds £2.50



Fiesta

### POPCORN ROBUST

order code 0245

Produces bright yellow/orange kernels which should be dried for 3 – 4 weeks before use.

25 seeds £2.50



Robust

## TOMATOES

### STONOR EXHIBITION TOMATO H

order code 0246

Round red fruit which has that old fashioned strong tomato flavour, may be grown indoors or a sheltered position outdoors,

Cordon habit. 30 seeds £2.25



Stonor

### SHIRLEY F1 TOMATO

order code 0247

A tried and tested variety, strong growth and uniform fruit with excellent flavour. Indoor only, Cordon habit.

7 seeds £3.50



Shirley

### ORKADO F1 TOMATO

order code 0248

Has good red colour and shelf life. Will stand cooler conditions. Cordon habit.

7 seeds £3.50



Orkado F1

### AKRON F1 TOMATO

order code 0249

Produces long trusses of medium sized fruit with good red colour. Is best grown indoors. Cordon habit.

7 seeds £3.50



Akron

### BLACK PRINCE TOMATO H

order code 0250

Very dark red to brown fruit, soft flesh with a sweet juicy flavour one of our heritage varieties. Indoor only. Cordon habit.

10 seeds £2.25





**Black Prince**

### **GOLDEN SUNRISE RHS AGM H**

**order code 0251**

Medium size round yellow fruit with thin skin & sweet flavour. Cordon habit.

**20 seeds £2.25**



**Golden Sunrise**

### **YELLOW PEARSHAPE H #**

**order code 0252**

Pear shaped fruit with a very thin skin and sweet taste. Very solid flesh with few seeds. Cordon habit.

**20 seeds £2.50**



**Yellow Pearshaped**

### **TIGERELLA TOMATO RHS AGM H**

**order code 0253**

Unusual round red tomato with a yellow stripe when ripe. Strong flavour. Cordon habit. **20 seeds £2.10**



**Tigerella**

### **HEINZ F1 TOMATO**

**order code 0254**

Developed by Heinz for their food products, this variety produces smooth sided uniform fruit. The flavour and texture make it ideal for soups and sauces. Grow as a bush either indoors or outdoors. **7 seeds £2.50**



**Heinz**

### **PLUMITO TOMATO H #**

**order code 0255**

This smooth sided rather square looking tomato is sweet and tasty, ideal for cooking and freezes well. Grow Indoors or outdoors. Cordon habit. **20 seeds £2.10**



**Plumito**

### **BRITAIN'S BREAKFAST TOMATO**

**H # order code 0256**

Red lemon shaped fruit on spectacular large spreading trusses, with as many as 60 fruit per truss. Fruit does not split when ripe. Indoor or outdoor growth. Cordon habit.

**30 seeds £2.10**



**Britain's Breakfast**

### **ALICANTE TOMATO**

**order code 0257**

Early season variety which produces a heavy crop of sweet medium sized fruit. Cordon habit.

**30 seeds £2.10**

## COCKTAIL CRUSH F1 TOMATO

order code 0258

A **blight resistant** variety producing a classic salad tomato with a great flavour.

7 seeds £3.50



Cocktail Crush



Crimson Crush

## CRIMSON CRUSH F1 TOMATO

order code 0259

**BLIGHT TOLERANT** Bright red, large fruit. Cordon variety can be grown outdoors.

7 Seeds £3.50

## STRIPED STUFFER TOMATO

order code 0260

Heritage striped variety with an easily removed core ideal for stuffing. Cordon habit.

7 seeds £2.25



Striped Stuffer



Zlatava

## ZLATAVA TOMATO H

order code 0261

Orange on the outside and red like a blood orange inside. Round fruits with an excellent flavour. Cordon habit.

7 seeds £2.25

## GARDENERS DELIGHT TOMATO

order code 0262

Cherry sized fruit on a tall plant. Can be grown outdoors. Cordon habit.

20 seeds £2.10

Order online at [mammothion.co.uk](http://mammothion.co.uk)

## RED CURRANT TOMATO H #

order code 0263

Small red fruit on long trusses. Very sweet flavour. Will grow as a tall, vigorous bush and can be fan trained. 20 seeds £2.50



Red Currant



Yellow Currant

## YELLOW CURRANT TOMATO H #

order code 0264

Produces long strings of small yellow tomatoes with very sweet flavour, Will grow as a tall, vigorous bush and can be fan trained.

20 seeds £2.50

## GOLDEN GRAPE TOMATO H

order code 0265

Small grape sized fruit of plum shaped appearance, has a spreading truss which can produce over 50 fruits. Indoor only, cordon habit. 20 seeds £2.10

## SANTA F1 TOMATO

order code 0266

Small plum shaped cherry tomatoes. Very sweet. Indoor or outdoor. Cordon habit.

7 seeds £3.50



Sungold



Santa

## SUNGOLD F1 TOMATO

order code 0267

Long strings of golden yellow cherry fruit with a sweet flavour. Grow indoors or outdoors. Cordon habit.

7 seeds £3.50

## CHOCOLATE CHERRY TOMATO

order code 0268

Long strings of dark fruit with excellent flavour. Cordon habit.

20 seeds £2.50



Chocolate Cherry



Red Cherry

## RED CHERRY TOMATO H #

order code 0269

Red cherry sized fruit, producing long strings of sweet thin-skinned tomatoes. Cordon habit.

30 seeds £2.10

## INDIGO BLUEBERRIES F1 TOMATO

order code 0270

Cherry sized purple fruit which ripens to a peachy purple on an indeterminate plant.

7 seeds £2.25



Indigo Blueberries

## RED ALERT TOMATO

order code 0271

Outdoor variety, large cherry sized fruit with excellent flavour. Ideal for containers or may be planted direct into the open ground. Bush habit.

20 seeds £2.10

## PATIO PLUM TOMATO RHS AGM

order code 0272

This variety has short internodes and shortened leaves, making it suitable for smaller pots. The tasty, grape sized fruit are borne on trusses which continue to produce for months. Bush habit.

10 seeds £2.25



Patio Plum



Lizzano F1

## LIZZANO F1 TOMATO

order code 0273

A highly BLIGHT RESISTANT bush variety

Will produce sweet bright red cherry sized fruit. Easy to grow. Bush habit.

7 seeds £3.50

## TUMBLER F1 TOMATO

order code 0274

Ideal for containers or baskets, no pinching out or stopping. Will produce cherry sized sweet tomatoes. Grow outdoor or indoor.

7 seeds £2.50



Tumbler F1

## OUTDOOR GIRL TOMATO H

order code 0275

Heritage bush variety for outdoor growing.

Produces good sized fruits. Bush habit.

20 seeds £2.10

## PEARDROP TOMATO

order code 0276

Determinate type (Bush type, do not remove side shoots). Yellow fruited variety with highly attractive pear/oval shaped fruit. A great flavour with a balance of sweetness and acidity making it a truly delicious fruit.

10 seeds £2.50

## OH HAPPY DAY F1 TOMATO

order code 0277

BLIGHT RESISTANT. Indeterminate plants producing large red fruit whilst retaining a good flavour. Ideal for slicing. Cordon habit.

7 seeds £2.50

## **GIGANTOMO F1 TOMATO** RHS AGM

**order code 0278**

Indeterminate plants producing very large red fruit whilst retaining a good flavour. Ideal for slicing. Cordon habit.

**7 seeds £2.50**



Gigantomo



Big Green

## **BIG GREEN F1 TOMATO**

**order code 0279**

Bright green fruits that remain green even when mature. Popular in Italy for the fantastic flavour when cooked. Cordon habit.

**7 seeds £3.50**

## **JUBILEE TOMATO** H #

**order code 0280**

Orange beefsteak, very sweet with a thin skin, indoor only, Cordon habit.

**20 seeds £2.50**



Jubilee

## **MARGLOBE TOMATO**

**order code 0281**

This large red beefsteak has very thick flesh and excellent flavour. Indoor only, cordon habit

**20 seeds £2.50**



Marglobe

## **BEEF HEART TOMATO** H

**order code 0282**

A heritage variety with large heart shaped red fruit with very few seeds. Very sweet. Cordon habit. Grow indoors.

**10 seeds £2.50**



Beefheart



Brandy Wine

## **BRANDY WINE TOMATO** H

**order code 0283**

A heritage tomato with very large sweet beefsteak tomatoes, deep red and juicy when ripe. Cordon habit. Grow Indoors.

**10 seeds £2.50**

## **OUR SELECTION OF HERBS.**

### **RED VEINED SORREL**

**order code H1**

Dark maroon stems and veins adding colour to a salad. Has a sharp tangy flavour when picked young. Perennial herb.

**100 seeds £2.00**



Red Veined Sorrel

### **BASIL GENOVESE**

**order code H2**

A large leaved variety for lots of tasty leaves all summer.

**100 seeds £2.00**

### **BASIL BRITISH**

**order code H3**

Variety of Basil which can be grown inside or outside. Has a lovely Basil scent and taste with large green leaves.

**100 seeds £2.00**

**Order online at [mammothion.co.uk](http://mammothion.co.uk)**





British Basil

### **BASIL THAI** order code H4

Thai Basil is used in many Thai and oriental dishes and adds a spicy aniseed/basil flavour to food. It can be used raw in salads or tossed into Thai curries. **100 seeds £2.00**

### **CORIANDER LEISURE** order code H5

Will produce lots of leaves. Slow to bolt. **100 seeds £2.00**

### **DILL DIANA** order code H6

The strongly flavoured leaves can be chopped into soups, salads or used to flavour rice.

**100 seeds £2.00**



Dill Diana

### **CHIVE POLYCROSS** order code H7

A good variety of this very useful herb. Can be cropped again and again. **100 seeds £2.00**

### **GARLIC CHIVES** order code H8

Perennial plant. Both leaves and flowers are edible.

**100 seeds £2.00**

Order online at [mammothion.co.uk](http://mammothion.co.uk)

### **WELSH ONION H** order code H9

Forms a large cluster of spring onion type shoots. Ideal for both salad or stir fry use. Perennial.

**00 seeds £2.00**

### **WELSH ONION RED H** order code H10

As Welsh Onion above but has red stems.

**100 seeds £2.00**

### **GREEN MOSS CURLED PARSLEY** order code H11

A good strain of this popular herb. Tight leaf with good length stems. Quick to grow once cutting starts. **50 seeds £2.00**



Green moss curled

### **FLAT LEAVED PARSLEY LAURA** order code H12

Popular herb producing good stems of fine flavour for many months. Can be grown in containers. **50 seeds £2.00**

### **FAULDS PARSLEY H** order code H13

A heritage variety with very tight curled leaf and good colour. Very slow to bolt, an exceptional variety.

**25 seeds £5.50**



Faulds

**1 pot FAULDS PARSLEY (5 plants).** Ready to plant outdoors or to pot into containers.

**£7.50 order code H14**

## PERILLA /SHISO RED

order code H15

Dark ruby red leaves with frilled edge. Makes a good patio or potager plant. May be left to self-seed. **50 seeds £2.00**



Red Perilla

## PERILLA /SHISO BI-COLOUR

order code H16

Leaves are green on top and ruby red underneath. May be left to self-seed. **50 seeds £2.00**

## PERILLA /SHISO GREEN

order code H17

Green leaves with frilled edge. Makes a good patio or potager plant. May be left to self-seed.

**50 seeds £2.00**

## FRENCH TARRAGON

PLANT  $\Delta$

order code HP17

Grown from cuttings and supplied ready to plant outdoors or to pot into containers.

**1 plant £7.50**



French Tarragon

## SHALLOTS

For more varieties available go to [www.mammothonion.co.uk](http://www.mammothonion.co.uk)

## HATIVE DE NIORT

SHALLOT H

VERY LIMITED STOCKS AVAILABLE THIS SEASON. PLEASE CONTACT FROM NOVEMBER 2024 FOR AVAILABILITY.



Hativ de Niort

## RED SUN SHALLOT

order code 0284

Red shallot with good flavour and keeping qualities. **10 sets £5.50**



Red Sun

## GOLDEN GOURMET SHALLOT H

order code 0285

Golden shallot with sweet flavour.

**10 sets £5.50**



Golden Gourmet

Order online at [mammothonion.co.uk](http://mammothonion.co.uk)

## YELLOW MOON SHALLOT

order code **0286**

Golden shallot with good tolerance to adverse weather conditions.

**10 sets £5.50**

## LONGOR SHALLOT

order code **0287**

Fine flavour. We are pleased to offer stocks of this good culinary shallot.

**250gms £8.50**



Longor

## GARLIC

**SOFTNECK** should not produce a seed head.

**HARDNECK** should produce a seed head.

We are pleased to offer you top quality selected stock of the following varieties. Dispatched from September.

### SOLENT WIGHT RHS AGM SOFTNECK

order code **0288**

This variety has given good results from Scotland to the south of England. Can be planted from October to March.

**2 bulbs £8.75**



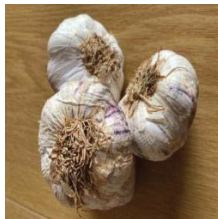
Solent Wight

### RHAPSODY WIGHT SOFTNECK

order code **0289**

Early maturing garlic with a hint of purple and a mild sweet taste. Known previously as purple wight. Plant September to January.

**2 bulbs £8.75**



Rhapsody Wight



Elephant garlic

### ELEPHANT GARLIC HARDNECK

order code **0290**

A large garlic producing only a few cloves per bulb. This variety has a sweet mild taste ideal for roasting.

**5 large planting cloves**

**(approx 1 whole bulb) £10.25**

### CAULK WIGHT HARDNECK

order code **0291**

Large cloved, easy peeling, vigorous, grows well in UK climate. Can withstand cold temperatures. Plant November to January.

**2 bulbs £8.75**

### CARCASSONNE WIGHT HARDNECK

order code **0292**

Pink cloved garlic showing great vigour in UK. A successful hardneck with good skin cover, great strength of flavour coupled with a good bouquet.

**2 bulbs £8.75**

### ROSE WIGHT HARDNECK

order code **0293**

Regular shape hardneck variety with large bulbs and large fat cloves. Hint of purple colour. Has an intense flavour and aroma. Approx 11-13 cloves per bulb.

**2 bulbs £8.75**

### WILD GARLIC H Δ

order code **0294**

Plant from August to February, harvest young leaves till early June when it will disappear until the following year.

Will seed and spread once established.

**10 bulbs £7.50**

Order online at [mammothion.co.uk](http://mammothion.co.uk)



Wild Garlic

## SNOWBALL ONION

order code 0297

Pure white medium sized bulbs with sweet mild flavour. Early summer maturity.

**250gms £5.75**



Snowball

**FOR MORE VARIETIES OF GARLIC, SHALLOT AND ONION SETS VISIT**

**[www.mammothonion.co.uk](http://www.mammothonion.co.uk)**

## ONIONS FROM SETS

**DELIVERY FROM JANUARY 2025**

250gms approx 50 onion sets

**MIX of RED BARON. SNOWBALL AND SETTON ONIONS**

order code 0295

**250gms £5.75**



Mixed sets

## SANTERO F1 ONION

order code 0298

Golden globe shaped bulb with good colour. Resistant to powdery mildew. Matures mid-August.

**250gms £5.75**

Seeds also available see code 0005



Santero

## RUMBA ONION

order code 0296

Oval shaped with golden skin. Good keeping qualities. Matures mid-summer.

**250gms £5.75**



Rumba

## CENTURION ONION AGM

order code 0299

Golden SEMI globe shaped bulb with good colour and flavour. Matures mid- August.

**250gms £5.75**

## RED BARON ONION

order code 0300

Red bulbs with a mild sweet flavour. Matures mid-summer.

**250gms £5.75**



Red Baron



## PINK PANTHER ONION

order code 0301

Mild pink onion similar to the French variety Rose of Roscoff. Matures mid-summer, stores well.

250gms £5.75



Pink Panther

## SETTON ONION

order code 0302

An early summer oval/round golden skinned variety. Strong flavour with good texture. Stores well.

250gms £5.75

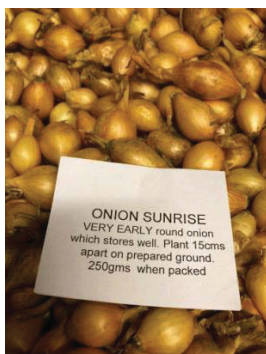


Setton

## SUNRISE ONION **NEW**

order code 0303

Early variety with good sized round shaped bulbs. 250gms £5.75



Sunrise

## RHUBARB UK ONLY

Crowns dispatched from end October to March

For more varieties go to [www.mammothonion.co.uk](http://www.mammothonion.co.uk)

## TIMPERLEY EARLY $\Delta$ H Early season order code 0304

Very thick red stems of a long length, has an excellent flavour, can be forced with ease.

1 planting crown £10.50

## VICTORIA Mid to late season $\Delta$ H order code 0305

Green Stems tinged with pink. May be forced for early use. Crops from March to August. Ideal for all types of use.

1 planting crown £10.50

## FULTONS STRAWBERRY SURPRISE $\Delta$

order code 0306

Superb flavour with bright red stems. Crops from May to September.

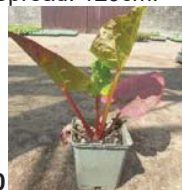
1 planting crown £10.50

## RHUBARB from SEED

### GLASKINS PERPETUAL

order code RS1

Started in heat during the winter months Glaskins Perpetual can be harvested lightly the following year. The large, juicy stems are excellent for tarts, pies, jam, and wine. As its name suggests, this reliable rhubarb can be harvested late in the season due to its low oxalic acid content. Easy to grow, will produce some variation in the seedlings ranging from green to pink and even red stems. Height: 60cm. Spread: 120cm.



25 seeds £2.00

## **POTATOES** UK ONLY

Dispatched from January 2025

**FOR THE FULL RANGE OF VARIETIES AVAILABLE CALL 01524 791210 OR VISIT [www.mammothonion.co.uk](http://www.mammothonion.co.uk)**

### **CASSABLANCA 1<sup>ST</sup> EARLY**

**order code 0307**

An exhibitors delight and a chef's dream. A very versatile variety with good flavour.

**£5.00 per 1kg**



Cassablanca

### **PINK FIR APPLE RHS AGM H**

**order code**

A Salad variety dating back to the 1880's, a MAINCROP producing long slim tubers, very waxy with full flavour.

**NO STOCKS AVAILABLE FOR 2025**

### **PREMIER**

**order code 0309**

1st early white skinned variety resistant to BLIGHT.

**£5.00 per 1Kg**



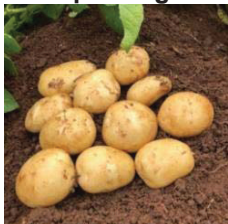
Premier

### **ACCOUSTIC**

**order code 0310**

2nd early white skinned variety resistant to BLIGHT

**£5.00 per 1Kg**

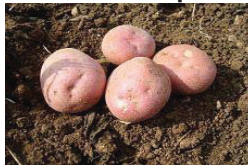


Acoustic

### **SETANTA**

**order code 0311**

Maincrop red skinned variety resistant to BLIGHT. **£5.00 per 1Kg**



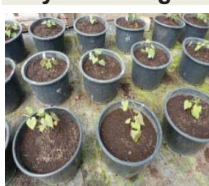
Setanta

### **SWEET POTATO SLIPS**

**UK only**

We are pleased to offer sweet potato slips (cuttings). Supplied from Mid-April to early June with full cultivation hints.

When growing sweet potato in cold areas they are best grown under protection.



### **BEAUREGARD IMPROVED**

Introduced from a virus free clone, Sweet Potato 'Beauregard Improved' has been very popular. Has good coloured flesh.

**5 slips £9.75 order code SW1**

**10 slips £17.50 order code SW2**

### **CAROLINA RUBY**

Sweet potato Carolina Ruby has proved reliable all over the UK with good coloured flesh

**5 slips £9.75 order code SW3**

**10 slips £17.50 order code SW4**

### **BEAUREGARD & CAROLINA RUBY**

5 slips of Beauregard

5 slips Carolina ruby

**10 slips £17.50 order code SW5**

### **T65**

Good variety for colder climates. Has white flesh

**5 slips £9.75 order code SW6**

**10 slips £17.50 order code SW7**

## BEAUREGARD, T65 & CAROLINA RUBY

5 slips of each

**£25.00 order code SW8**

## PURPLE FLESHED

Will produce a deep purple flesh full of antioxidants. Is best grown under cover.

**5 slips £11.50**

**order code SW9**

## JERUSALEM ARTICHOKE **H**

**FUSEAU  $\Delta$  UK ONLY**

**order code 0312**

Will grow in any soil conditions, when fully grown the plants may reach 6 feet tall. Each planted tuber will yield over 15 tubers. They may be used in a wide range of recipes.

**Delivered from January 2025**

**£9.50 per 10 tubers**



## GLOBE ARTICHOKE PLANTS

**UK ONLY**

Once established will give you excellent crops for many years, we are able to offer you the choice of three varieties.

Plants are delivered during April, May and June ready for planting outdoors.

## GREEN GLOBE $\Delta$ H

**order code 0313**

Green heads of a good size, on a compact plant.

**ONE PLANT £7.75**



## ARTICHOKE ROMANESCO $\Delta$

**order code 0314**

Purple-tinged heads of a fine flavour.

**ONE PLANT £7.75**



## ARTICHOKE VIOLETTE DI CHIOGGIA $\Delta$

**order code 0315**

Unusual striking purple heads with silvery green leaves.

**ONE PLANT £7.75**

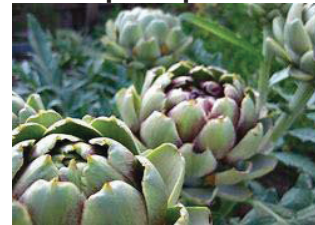


**ONE PLANT OF EACH VARIETY**

**GLOBE ARTICHOKE**

**order code 0316**

**£22.00 per 3 plants**



## CARDOON PLANTS

**order code 0317 UK ONLY  $\Delta$  H**

A vegetable popular in Victorian times.

Perennial, needs a permanent site.

**ONE PLANT £7.75**



Cardoon

## WASABI

order code 0318

The plant is happy in a pot in a cool greenhouse or in a sheltered position outdoors. Makes a large plant providing that hot kick.

**£9.00 per plant**

Dispatched from April 2025



Wasabi

## HORSERADISH △ H

order code 0319

Very easy to grow. Suitable for every type of soil condition or climate. Can be invasive.

**5 thongs £13.00**



## EDIBLE & POLLINATOR FLOWERS

### NASTURTIUM BLUE PEPE

order code EF1

Tall spreading plant. Will produce edible leaves and flowers with a peppery taste for salads. Can self-seed.

**50 seeds £2.00**



Blue Pepe



Pot Marigold

## POT MARIGOLD

order code EF2

Also known as calendula. Will provide edible flowers for salads all summer long. Can also be used to colour foods in place of saffron.

**50 seeds £2.00**

## SPILANTHESE- PARA CRESS

order code EF3

A tender, evergreen perennial usually grown as an annual, sometimes called the TOOTHACHE PLANT. Has dark bronzy green leaves with petal-less, pompom flowers, from mid-summer to early autumn.

**50seed £2.50**



Spilanthese



Pikes Peak

## SUNFLOWER PIKE'S PEAK

order code EF4

One of the tallest varieties in the world, can grow 4.6m(15ft). Flowers July to September. The birds will love the seeds after flowering.

**10 seeds £2.25**

## BEE & BUTTERFLY MIXTURE

order code EF5

Mix includes 20 species from the RHS 'Perfect for Pollinators' list as well as Borage, Sainfoin and Dwarf Sunflowers. Sow during March and April will flower from May to October. Height range 15-200cms.

Sow at a rate of 3gm per sq/m.

**5gm packet £4.75**





# GREEN MANURE

## PHACELIA TANACETIFOLIA

### order code M1

100gms will cover approx 30sq metres

Sow mid-March to September, dense quick growing foliage for digging in before flowering.

Suitable for all type of ground

**100gms £3.50**

## GRAZING RYE

### order code M2

100gms will cover 30sq metres

Sow from August to November, can be dug in early spring before flowering.

**250gms £3.50**

## OVERWINTER MIX

### order code M3

250gms will cover approx 15sq metres

Cereal Rye and Vetch make an excellent companion and are usually very reliable. Sow from September to early November for a nitrogen fix. Dig in April/May before flowering.

**250gms £3.50**

## FIELD BEAN

### order code M4

Can be sown from September until late November at a rate of 200gms per 10sq meters. Suitable for all types of ground, especially good on heavier ground.

**200gms £3.50**

## COMFREY **NEW**

### order code M5

A perennial plant, its leaves can be harvested several times a season and used as a compost activator to help breakdown other compost materials.

Can also be used as a mulch, or to make a liquid manure.

Happy in the sun or shade, rich in potassium, good for feeding flowers and fruit, also contains phosphorus and nitrogen. Once you've made your liquid feed it will be higher in general nutrients than manure. It also contains Vitamin B12 – Brilliant for plant growth.

**50seeds £2.00**



Wide range of vegetable plants available for collection from the nursery during spring. From February for heated greenhouse or from April for unheated greenhouse and outdoors. Contact the nursery or visit our website or facebook page for details.

Seed potatoes available from February and SUMMER planting potatoes available from June 2025. For opening times see back of catalogue.

To order seeds online go to [www.mammothonion.co.uk](http://www.mammothonion.co.uk) or ring in on 01524 791210

## MAMMOTH ONION, LEEK AND CELERY SEEDLINGS

Open rooted seedlings for potting on. Not ready for planting outdoors

Dispatched from **late Feb to end of March. Order by 1<sup>st</sup> week March**

### MAMMOTH IMPROVED ONION

10 Seedling £12.60 order code S1	
20 Seedling £16.00 order code S2	
50 Seedling £22.70 order code S3	
100 Seedling £36.00 order code S4	

### MAMMOTH RED ONION

10 Seedling £12.60 order code S5	
20 Seedling £16.00 order code S6	
50 Seedling £22.70 order code S7	
100 Seedling £36.00 order code S8	

### MAMMOTH BLANCH LEEK

10 Seedling £12.60 order code S9	
20 Seedling £16.00 order code S10	
50 Seedling £22.70 order code S11	
100 Seedling £36.00 order code S12	

### MAMMOTH POT LEEK

10 Seedling £12.60 order code S13	
20 Seedling £16.00 order code S14	
50 Seedling £22.70 order code S15	
100 Seedling £36.00 order code S16	

### MAMMOTH WHITE CELERY

10 Seedling £12.60 order code S17	
--------------------------------------	--

### MAMMOTH PINK CELERY

10 Seedling £12.60 order code S18	
--------------------------------------	--

### MARTINE CELERY

10 Seedling £12.60 order code S19	
--------------------------------------	--

<b>POSTAGE PLANTS &amp; SEED</b>	<b>£10.25</b>
--------------------------------------	---------------

<b>POSTAGE PLANTS ONLY</b>	<b>£8.95</b>
--------------------------------	--------------

To order online go to  
[www.mammothonion.co.uk](http://www.mammothonion.co.uk)



# MAMMOTH ONION, LEEK AND CELERY PLANTS

Open rooted, ready to plant outside. Dispatched from **April to mid May**

**Order by mid April**

## MAMMOTH IMPROVED ONION

10 Plants £16.80	order code	P1
20 Plants £28.00	order code	P2
50 Plants £40.00	order code	P3
100 Plants £60.00	order code	P4

## MAMMOTH RED ONION

10 Plants £16.80	order code	P5
20 Plants £28.00	order code	P6
50 Plants £40.00	order code	P7
100 Plants £60.00	order code	P8

## MAMMOTH BLANCH LEEK

10 Plants £16.80	order code	P9
20 Plants £28.00	order code	P10
50 Plants £40.00	order code	P11
100 Plants £60.00	order code	P12

## MAMMOTH POT LEEK

10 Plants £16.80	order code	P13
20 Plants £28.00	order code	P14
50 Plants £40.00	order code	P15
100 Plants £60.00	order code	P16

## MAMMOTH WHITE CELERY

10 Plants £16.80	order code	P17
------------------	------------	-----

## MAMMOTH PINK CELERY

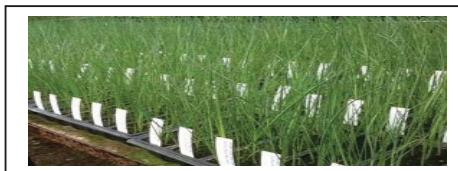
10 Plants £16.80	order code	P18
------------------	------------	-----

## MARTINE CELERY

10 Plants £16.80	order code	P19
------------------	------------	-----

<b>POSTAGE PLANTS ONLY</b>	<b>£8.95</b>
--------------------------------	--------------

<b>POSTAGE PLANTS &amp; SEED</b>	<b>£10.25</b>
--------------------------------------	---------------



ALL PLANTS AVAILABLE FOR COLLECTION FROM THE NURSERY

## READY TO PLANT HARDENED OFF BRASSICA PLANTS

Open rooted plants not plugs    Dispatched from **April**.

<b>ROBINSON'S CHAMPION GIANT CABBAGE</b>	5 Plants £5.25	order code B1
<b>STONEHEAD F1 CABBAGE</b>	5 Plants £5.25	order code B2
<b>RED CABBAGE</b>	5 Plants £5.25	order code B3
<b>DOK ELGON CAULIFLOWER</b>	5 Plants £5.25	order code B4
<b>FLAMENCO F1 CAULIFLOWER</b>	5 Plants £5.25	order code B5
<b>IGOR F1 BRUSSELS SPROUT</b>	5 Plants £5.25	order code B6

## SMALLER VARIETY ONION, LEEK AND CELERY PLANTS

Open rooted, ready to plant outside. Dispatched from **April to Mid May**.

**Order by mid April**

### SELF BLANCHING CELERY

10 Plants £16.80    order code P20
------------------------------------

### CELERIAC

10 Plants £16.80    order code P21
------------------------------------

### AILSA CRAIG ONION

20 Plants £25.00    order code P22
------------------------------------

50 Plants £40.00    order code P23
------------------------------------

### RIJNSBURGER ONION

20 Plants £25.00    order code P24
------------------------------------

50 Plants £40.00    order code P25
------------------------------------

### RED BARON ONION

20 Plants £25.00    order code P26
------------------------------------

50 Plants £40.00    order code P27
------------------------------------

### ROSE OF ROSCOFF ONION - **NEW**

20 Plants £25.00    order code P28
------------------------------------

50 Plants £40.00    order code P29
------------------------------------

### JOLANT LEEK

20 Plants £25.00    order code P30
------------------------------------

50 Plants £40.00    order code P31
------------------------------------

### LANCASTER LEEK

20 Plants £25.00    order code P32
------------------------------------

50 Plants £40.00    order code P33
------------------------------------



Autumn planting onion sets are available from early September to October.  
Please contact the nursery on 01524 791210 for details or visit  
[www.mammothonion.co.uk](http://www.mammothonion.co.uk) for updates and availability.



**N.B. Orders for delivery autumn 2025 accepted from August 2025  
UK DELIVERY ONLY**

**YELLOW WINTER formally known as RADAR** Autumn Planting Onion Sets

Good shape. Will mature May-June from an Autumn planting.

**250gms £5.75**

DISPATCHED FROM SEPTEMBER 2025

**SENSHYU YELLOW** Autumn Planting Onion Sets

One of the original Japanese over wintering onions,  
semi flat with a yellow/brown skin. Matures June.

**250gms £5.75**

DISPATCHED FROM SEPTEMBER 2025



**TORNADO** Autumn Planting Onion Sets

This new oval shaped onion has strong flavour and good keeping qualities. It is the first of  
all the autumn planting onions to mature.

**250gms £5.75**

DISPATCHED FROM SEPTEMBER 2025

**ELECTRIC** Autumn Planting Onion Sets.

Will produce red onions from June. Plant from September and grow through the winter to  
produce onions much earlier than from traditional spring plantings.

**250gms £5.75**

DISPATCHED FROM SEPTEMBER 2025



**AUTUMN CHAMPION formally known as SHAKESPEAR** Autumn Planting Onion Sets.

A variety for Autumn planting. Produces golden globe shaped onions earlier than many  
varieties. Matures end of May.

**250gms £5.75**

DISPATCHED FROM SEPTEMBER 2025



**RED WINTER** Autumn Planting Onion Sets.

Red onion with good keeping qualities and a mild sweet flavour.

**250gms £5.75**

DISPATCHED FROM SEPTEMBER 2025

**YELLOW WINTER- RED WINTER** Autumn Planting Onion Sets.

A mix of the two varieties. approx. 125gms of each in the same pack.

**250gms £5.75**

DISPATCHED FROM SEPTEMBER 2025

**For other autumn planting vegetables visit [www.mammothonion.co.uk](http://www.mammothonion.co.uk) and click on  
summer and autumn Planting or call 01524 791210**

# W. ROBINSON & SON (Seeds & Plants) Ltd SUNNY BANK, FORTON, NR. PRESTON, PR3 0BN

To order by phone ring 01524 791210

To order online and for cultivation help go to [www.mammothion.co.uk](http://www.mammothion.co.uk)

## ORDER FORM 2025

Order code	Quantity	Variety	Price	£ Total p
		POSTAGE seed only	3	15
		POSTAGE plants only	8	95
		POSTAGE potato, garlic & onion sets only	5	50
		POSTAGE seed and plants	10	25
		POSTAGE COSTS CORRECT TO APRIL 2025	<b>TOTAL</b>	

Name .....

Address .....

.....

..... Post Code .....

Telephone .....

Delivery instructions .....

I enclose cheque value £ .....

OR credit/debit card number

--	--	--	--	--	--	--	--	--	--	--	--	--	--	--	--	--	--	--	--	--

Expiry Date..... Start Date ..... Card Security No.....

*If you prefer not to receive our next catalogue in the post please tick the box*

# W. ROBINSON & SON (Seeds & Plants) Ltd

## SUNNY BANK, FORTON, NR. PRESTON, PR3 0BN

To order by phone ring 01524 791210

To order online and for cultivation help go to [www.mammothonion.co.uk](http://www.mammothonion.co.uk)

### ORDER FORM 2025

Order code	Quantity	Variety	Price	£ Total p	
		POSTAGE seed only		3	15
		POSTAGE plants only		8	95
		POSTAGE potato, garlic & onion sets only		5	50
		POSTAGE seed and plants		10	25
		POSTAGE COSTS CORRECT TO APRIL 2025	<b>TOTAL</b>		

Name.....

Address .....

.....

..... Post Code.....

Telephone .....

Delivery instructions .....

I enclose a cheque for £.....

OR credit/debit card number

--	--	--	--	--	--	--	--	--	--	--	--	--	--	--	--	--	--	--	--

Expiry Date..... Start Date ..... Card Security No.....

If you prefer not to receive our next catalogue in the post please tick the box.

## **Growing vegetables in pots or containers.**

Many types of vegetables can be grown in pots or containers. It is useful when space is limited.

### **A few simple rules apply.**

Make sure the container is large enough to support the vegetable.

Use a loam-based compost such as John Innes No.2, or a mix of compost and John Innes No.2. This will ensure a good root system and John Innes has more water retention than fibre-based compost.

Feed regularly, all pot grown vegetables need more feed than ones in the open ground. Water well during growth, especially during the hot summer months as container grown vegetables will dry out quickly.

Choose the right type of vegetable to grow. Listed below are some we have found very successful.

Spinach, Chard, Tomatoes, Cucumber, Courgette, Squashes (small fruited varieties are best), Kale, Cabbage, Lettuce. Beetroot, Carrots, Rocket, American Land Cress, Parsley, Beans, Peas, Spring Onions, Radish, Turnip.

The large vegetables for exhibition are best grown in the open ground outdoors; they need a lot of attention when grown in containers.

Many trailing plants can be grown up a decorative obelisk or frame and look just as attractive as any flowering plant. Kale, Spinach and Chard are frost hardy and so make a useful winter cut and come again vegetable.

## **GENERAL RULES FOR FEEDING VEGETABLES.**

**Root vegetables.** Not required if the ground is correctly prepared.

**Brassica.** Not required if the ground is correctly prepared

**Chilli Peppers.** When the fruit has started to set and swell well, don't feed too early.

**Courgettes, Marrows and Cucumbers.** When first picking starts.

**Onions and Leeks.** Not required if the ground is correctly prepared.

**Onions and Leeks for exhibition.** Not required if the ground is correctly prepared. However an extra dressing of general fertilizer can be given.

**Peppers and Aubergines.** When fruit is golf ball size.

**Tomatoes under glass.** When the fruit on the first truss is pea size.

**Tomatoes outdoors.** When the fruit on the second truss is pea size.

### **N.B**

**PEAT FREE COMPOST NEEDS MORE FEED THAN THE OLD PEAT BASED TYPE.**

**PLANTS REQUIRE WATER TO TAKE UP THE NUTRIENTS. ALWAYS WATER WELL DURING HOT DRY CONDITIONS.**





**Tomatoes of every shape, size and colour**



**Onion seed in production**

**Why not visit the nursery during APRIL & MAY. We have one of the largest ranges of vegetable plants in the UK.**

**Our range includes many varieties of tomato, sweet pepper, chilli, cucumber plus many unusual vegetables. Our range of brassica covers every taste and season and of course our range of onions and leeks for both the kitchen and the show bench**

**find us on Facebook. [www.facebook.com/mammothvegetables](http://www.facebook.com/mammothvegetables)**



**How to find the Nursery.**

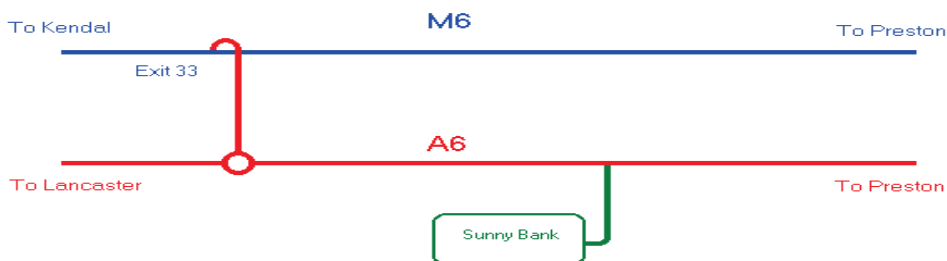
**17 miles north of Preston, on the A6.**

**2 miles south from junction 33 of the M6 motorway.**

**For sat nav follow PR3 0BN**



**Watch for the yellow onion sign.**



**Opening times.**

**MARCH: Mon-Fri 10am to 4pm Sat-Sun 10am to 2pm**  
**APRIL AND MAY: Mon-Fri 10am to 4pm Sat-Sun 10am to 4pm**  
**JUNE: Mon-Fri 10am to 4pm Sat-Sun 10am to 2pm**  
**JULY TO FEBRUARY: Mon-Fri 10am to 4pm**  
**SPRING BANK HOLIDAYS 10am to 4pm**

**W Robinson & Son (Seeds & Plants) Ltd**  
**'The Home of the Mammoth Onion'**  
**Sunny Bank, Forton, Nr Preston, PR3 0BN**  
**Tel. 01524 791210**  
**[www.mammothonion.co.uk](http://www.mammothonion.co.uk) [info@mammothonion.co.uk](mailto:info@mammothonion.co.uk)**